

Price Trends for Major Roadway Inputs

January 2009 Update

Prepared by:

John Semmens
Arizona Transportation Institute
jsemmens@cox.net

TABLE OF CONTENTS

| | |
|-------------------------------------|----|
| REPORT DATA | 3 |
| REMAINDER OF THE REPORT | 3 |
| SHORT TERM FLUCTUATIONS | 4 |
| LONG TERM FLUCTUATIONS | 5 |
| 1-YEAR | 5 |
| 5-YEARS | 5 |
| 10-YEARS | 5 |
| TREND | 5 |
| GRAPHS..... | 6 |
| ASPHALT..... | 6 |
| DIESEL..... | 6 |
| GASOLINE..... | 7 |
| LABOR..... | 7 |
| LUMBER..... | 8 |
| PORTLAND CEMENT | 8 |
| PLASTIC CONSTRUCTION PRODUCTS | 9 |
| STEEL REBAR | 9 |
| OVERALL..... | 10 |
| APPENDIX: DATASET | 11 |

REPORT DATA

The data for this report is obtained from U.S. Department of Labor Bureau of Labor Statistics' web site at <http://www.bls.gov/data/>, <http://data.bls.gov/cgi-bin/srgate>, <http://data.bls.gov/cgi-bin/dsrv?pc>. The specific items used were as follows:

| Item | Code # |
|---------------------------------|---------------|
| Asphalt | WPU05810112 |
| Construction Labor | CEU2023730008 |
| Diesel | WPU05730302 |
| Gasoline | WPU0571 |
| Lumber | WPU081 |
| Plastic Construction Products | WPU072106 |
| Portland Cement | WPU13220161 |
| Steel Rebar | WPU101708 |
| Highway and Street Construction | PCUBHWY |

REMAINDER OF THE REPORT

The remainder of this report portrays and discusses: (1) short term price fluctuations, (2) the longer term trend in prices. Numerous graphs depict the price trends. A full set of data for all items covered in this report is shown in the Appendix.

SHORT TERM FLUCTUATIONS

The purpose of this section is to provide users with information that may help explain differences in prices that may exist between the pre-bid estimate and the actual winning bid for a project. Pre-bid estimates are prepared approximately 3 months prior to the due date for bids. If prices of key components of construction are volatile, the differences between the state's estimate and bid price for a project may be substantial.

As shown in Figure 1, most prices exhibited substantial declines. No prices rose. Gasoline declined the most (-64%) for the 3-month period. Overall prices declined (-17%).

| | diesel | gasoline | asphalt | steel | PCC | lumber | plastic | labor | overall |
|-------------------------|--------|----------|---------|-------|-----|--------|---------|-------|---------|
| <i>Sep 08 to Oct 08</i> | -18% | -27% | -18% | -5% | 0% | -5% | 0% | -1% | -6% |
| <i>Sep 08 to Nov 08</i> | -34% | -51% | -31% | -12% | +1% | -6% | -1% | -4% | -12% |
| <i>Sep 08 to Dec 08</i> | -50% | -64% | -45% | -24% | 0% | -8% | -2% | -6% | -17% |

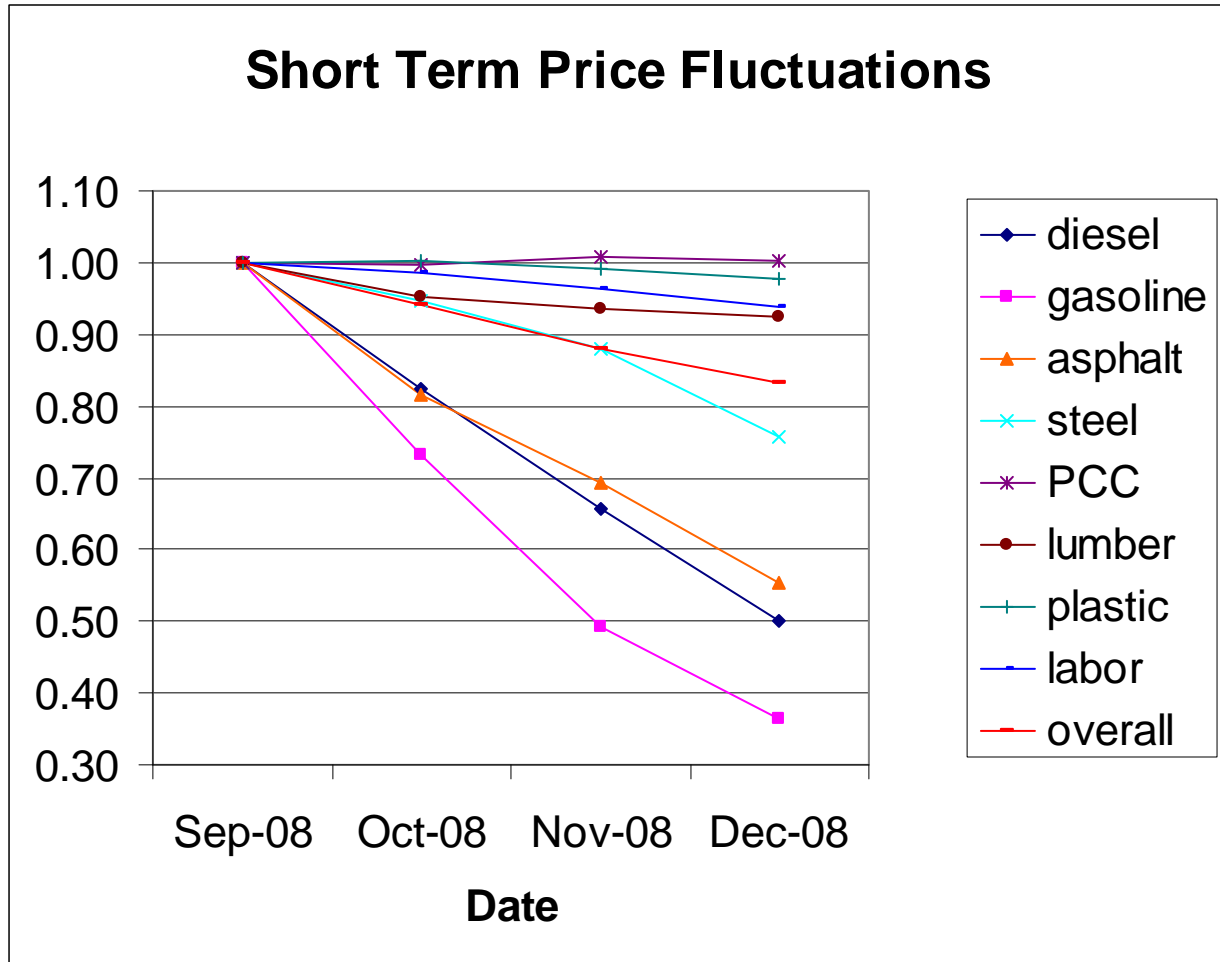


Figure 1. Short Term Price Fluctuations

LONG TERM FLUCTUATIONS

The purpose of this section is to give users a quick look at the relative changes in prices over the time spans of 1-year, 5-years, and 10-years. This gives a sense for which items have been the largest factors affecting the cost of construction projects over time.

1-YEAR

Over the last year, asphalt prices have increased the most (+48%). gasoline declined the most (-51%). Overall, construction costs have fallen (-1%).

5-YEARS

Over the last 5 years, asphalt prices rose the most (+178%). Lumber prices declined (-15%). Overall, construction costs have risen (+47%).

10-YEARS

Over the last 10 years, diesel prices rose the most (+339%). Lumber has actually declined in price (-11%). Overall, construction costs have risen (+64%).

| | diesel | gasoline | asphalt | steel | PCC | lumber | plastic | labor | overall |
|---|---------------|-----------------|----------------|--------------|------------|---------------|----------------|--------------|----------------|
| <i>1 year</i> | -37% | -51% | +48% | -7% | -1% | -8% | +3% | +1% | -1% |
| <i>5 years</i> | +75% | +21% | +178% | +36% | +39% | -15% | +34% | +16% | +47% |
| <i>10 years</i> | +339% | +165% | * | +42% | +41% | -11% | +49% | +36% | +64% |
| * There is a gap in the data for asphalt that prevents a calculation of the price change over this time span. | | | | | | | | | |

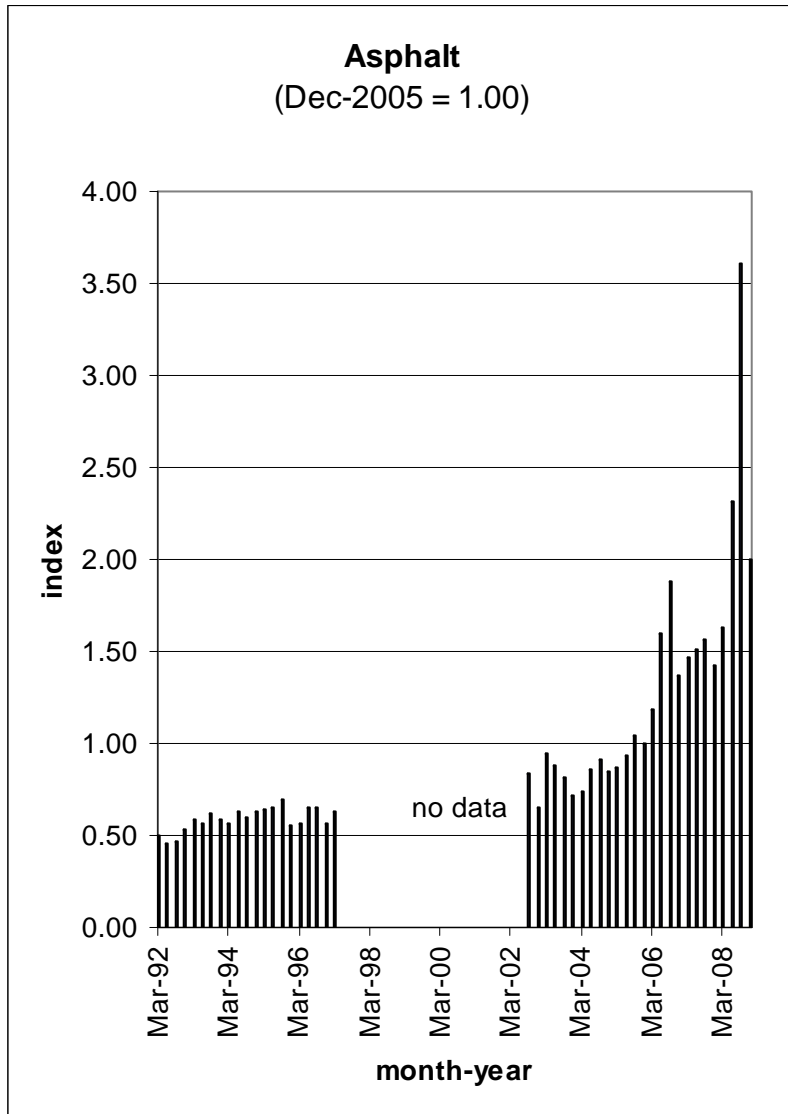
The long term graphs for each commodity and the overall index appear on the following pages. The full data set is in the Appendix.

TREND

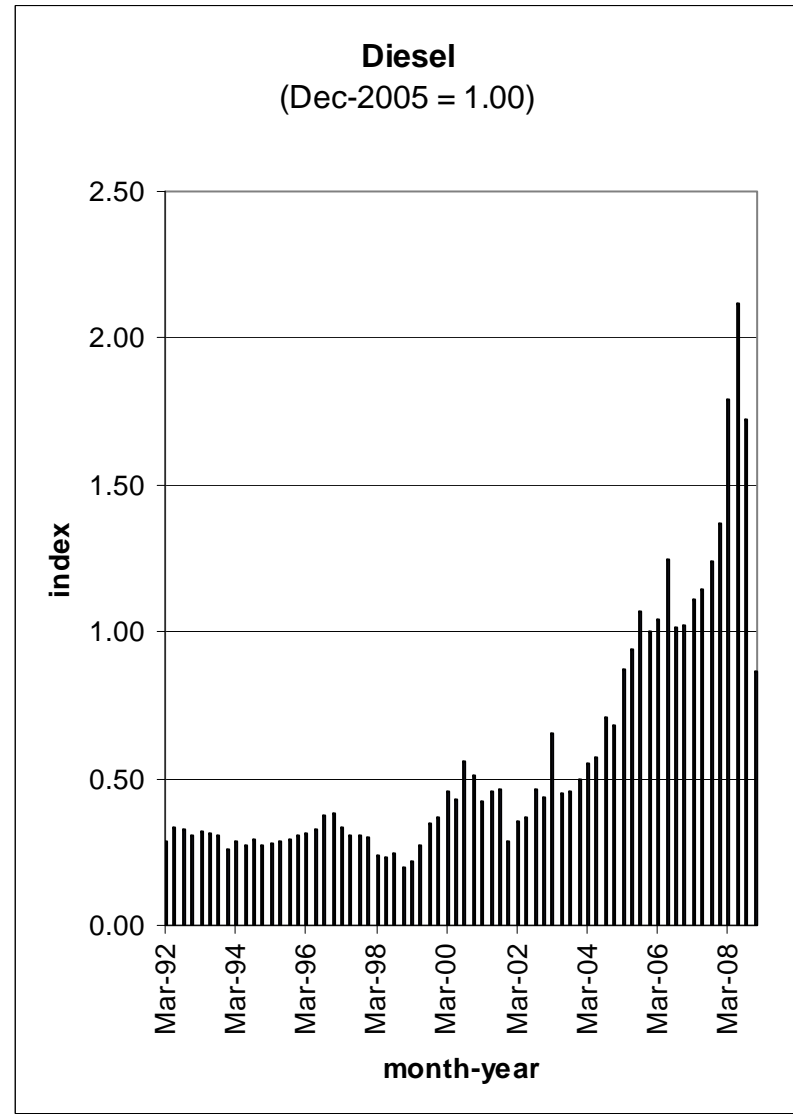
The general pattern over the period covered (1992 to the present) shows a moderate rate of price increases for the first 12 years and an accelerated rate of increases for the next 4-year period. Recessionary economic conditions are sending most prices downward for the time being. Whether this pattern will persist over time is uncertain.

GRAPHS

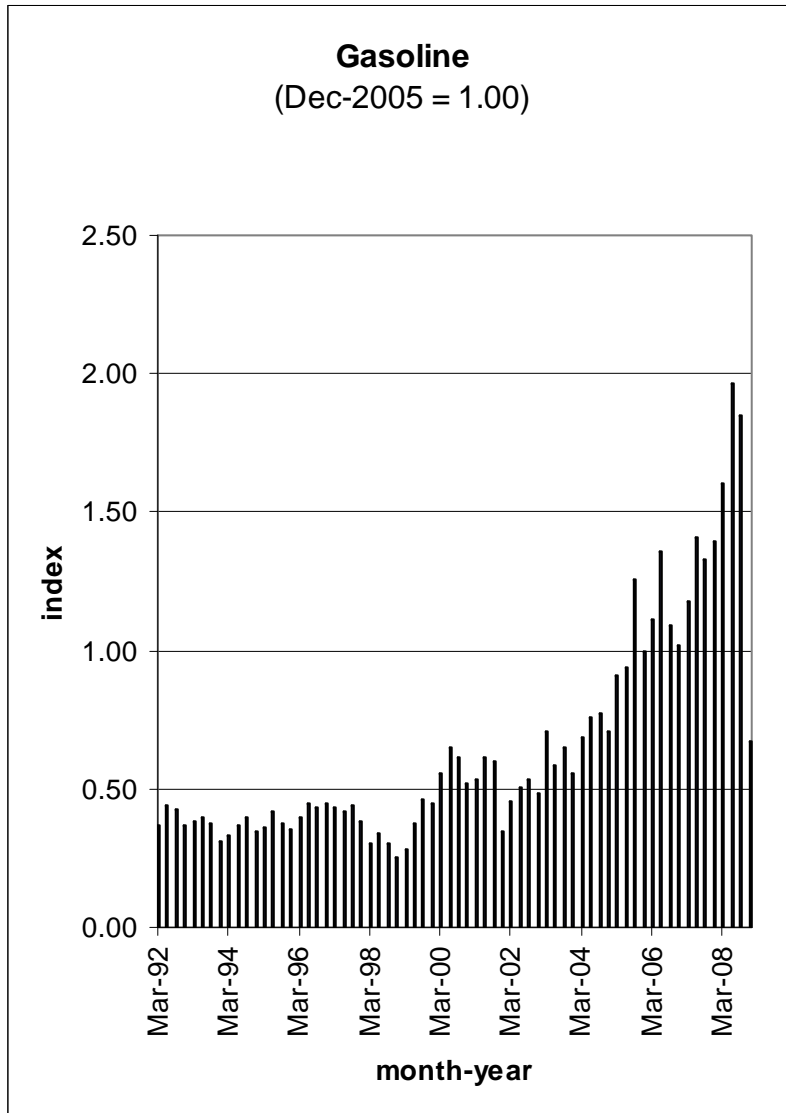
ASPHALT



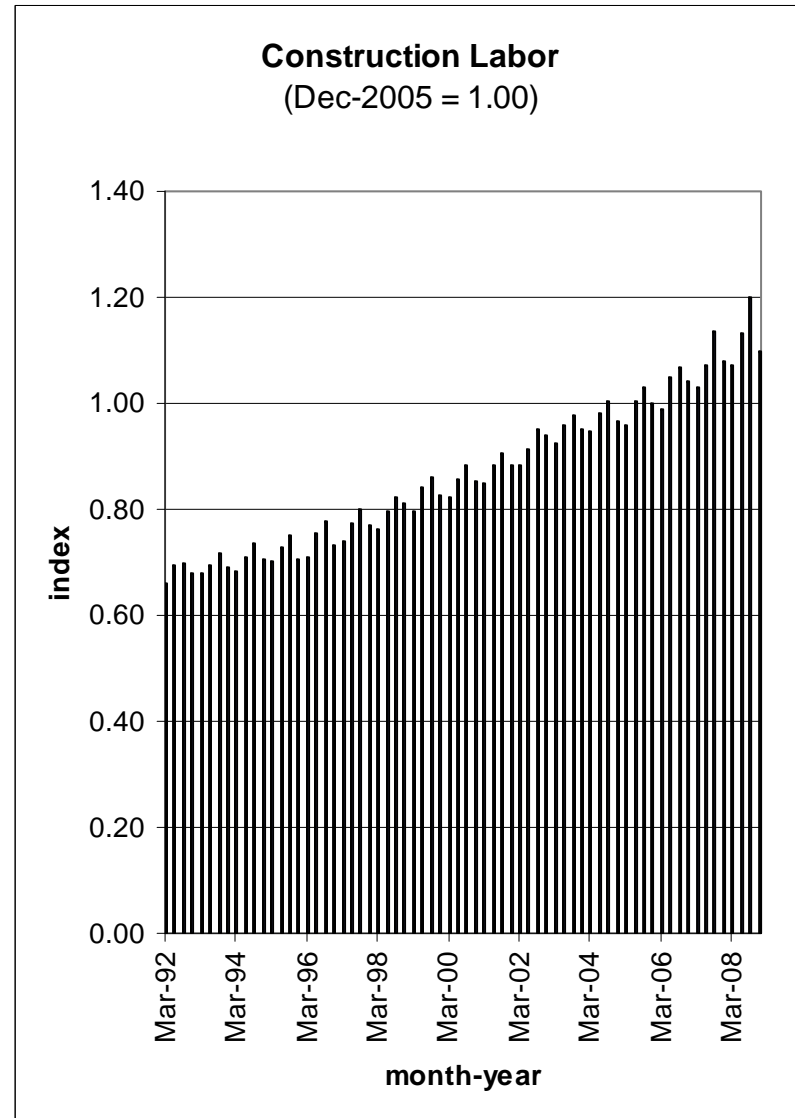
DIESEL



GASOLINE

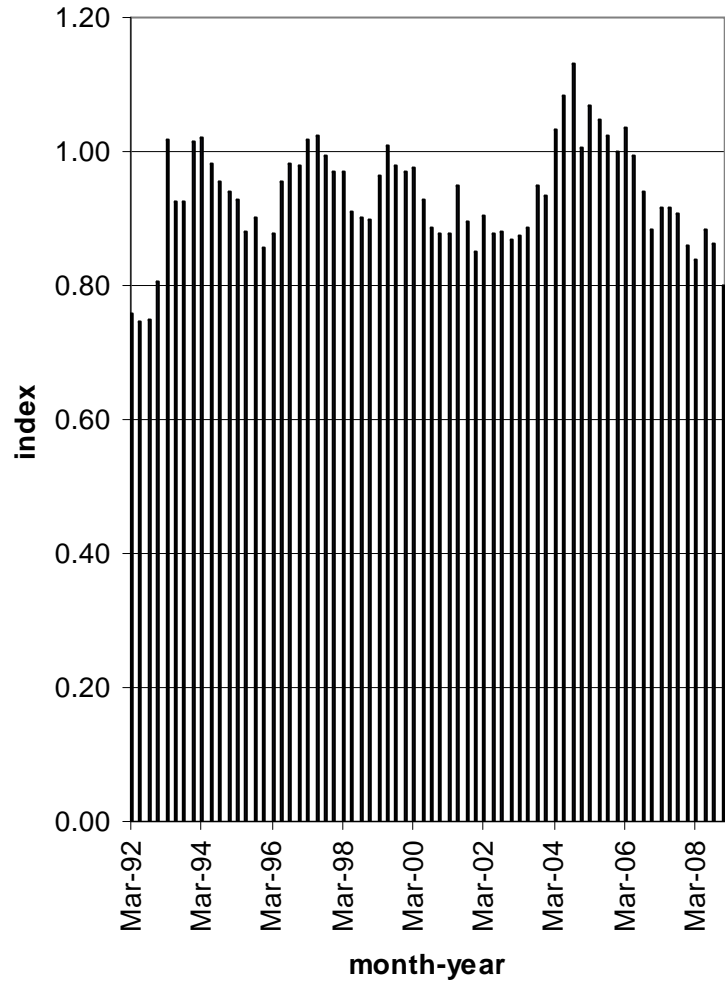


LABOR



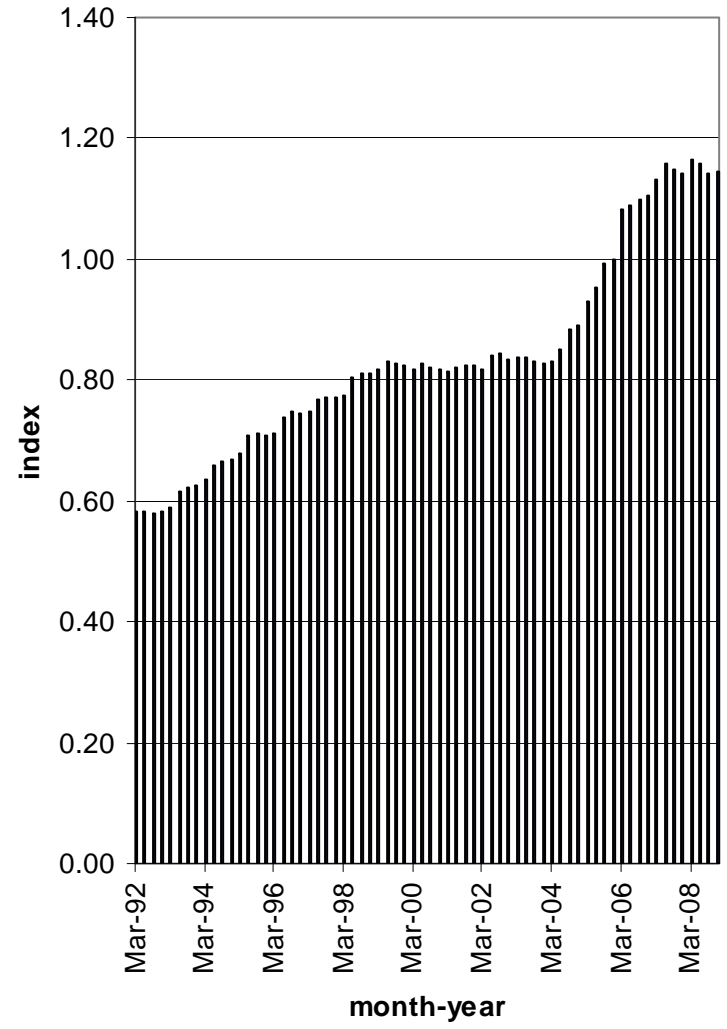
LUMBER

Lumber
(Dec-2005 = 1.00)

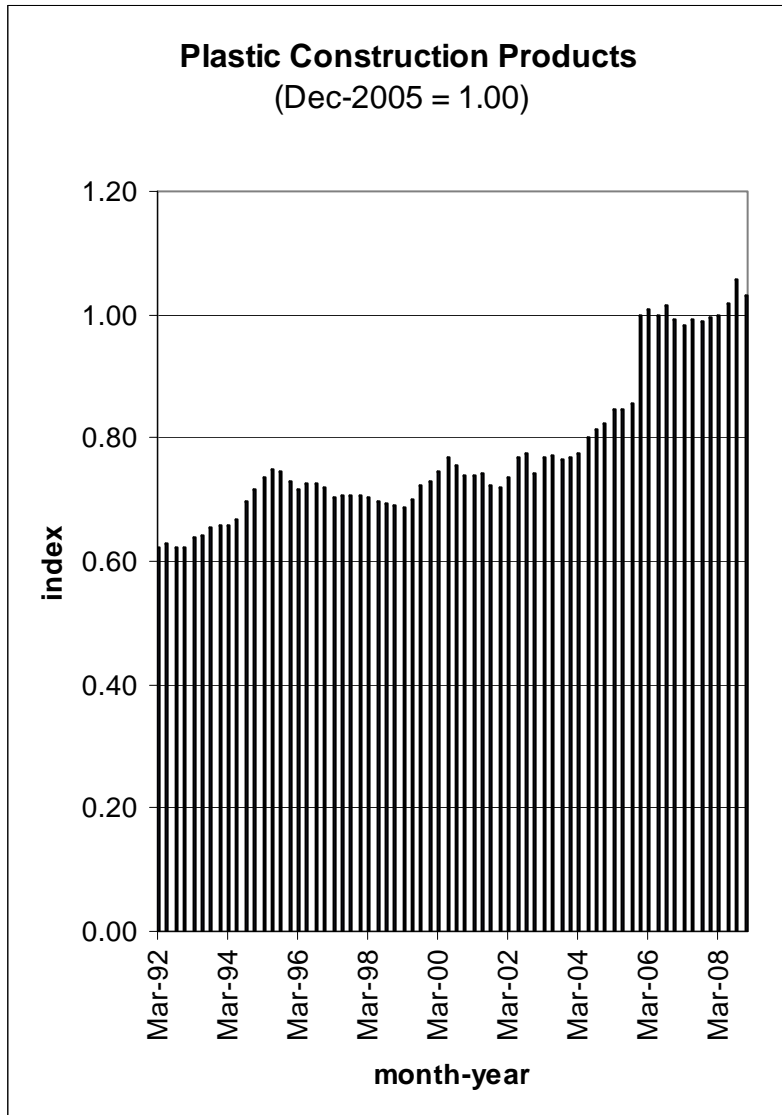


PORTLAND CEMENT

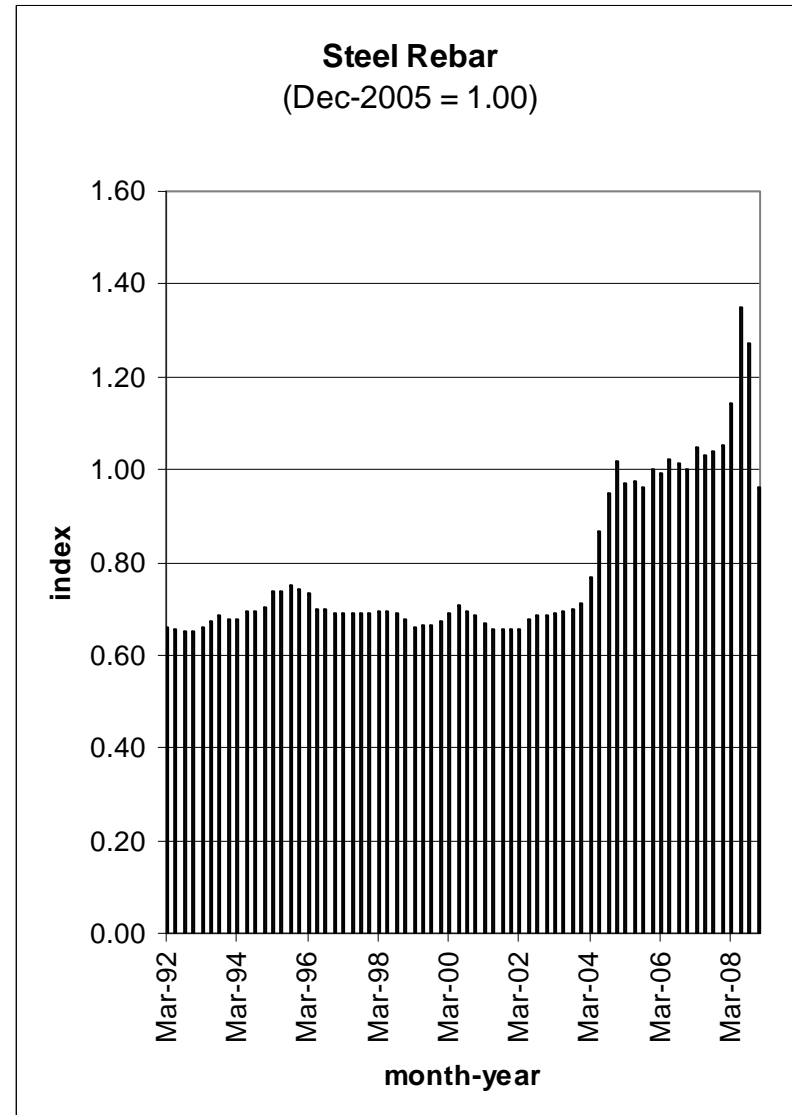
Portland Cement
(Dec-2005 = 1.00)



PLASTIC CONSTRUCTION PRODUCTS

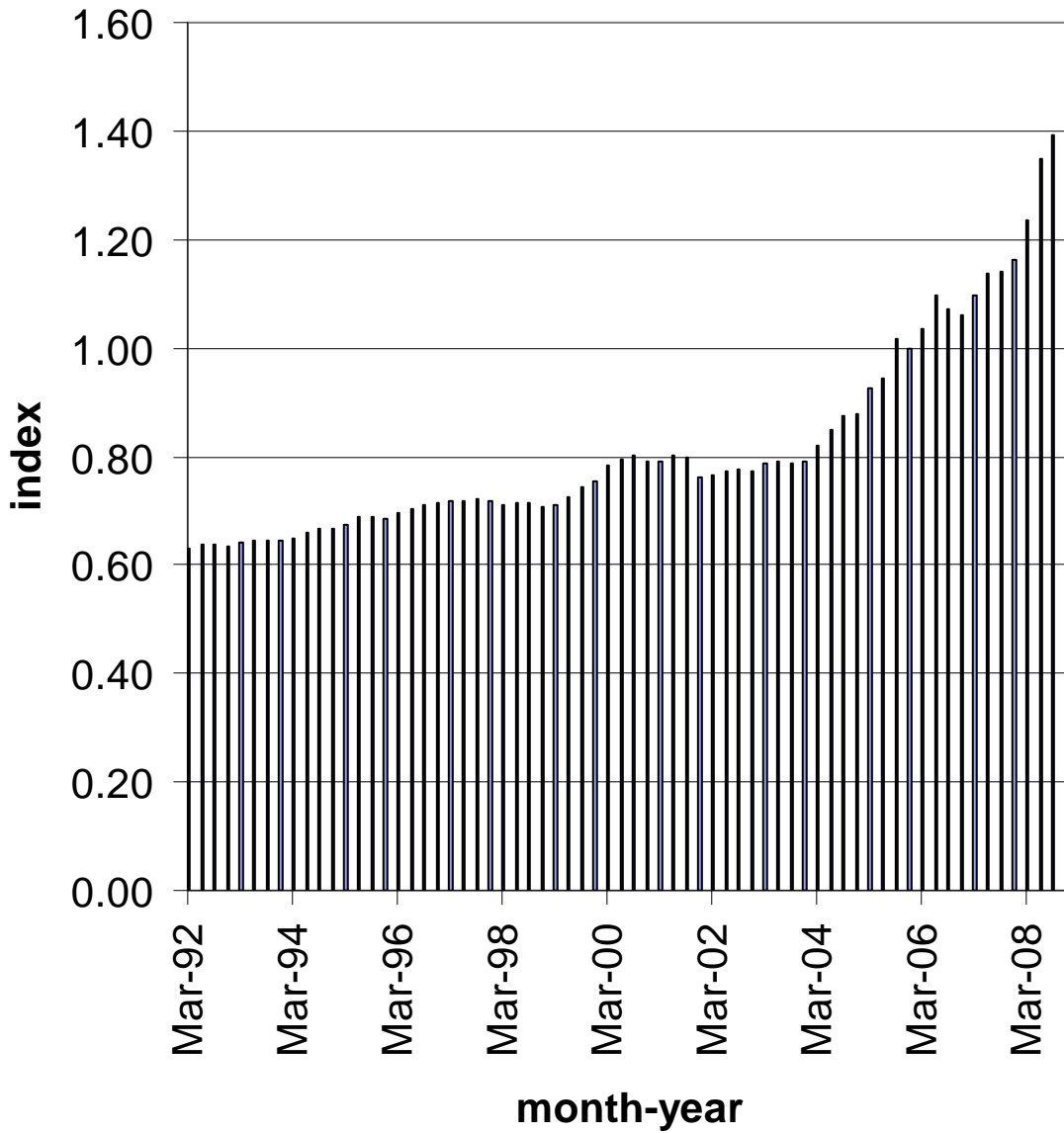


STEEL REBAR



OVERALL

Overall Highway Construction Costs (Dec-2005 = 1.00)



APPENDIX: DATASET

(Dec-2005 = 1.00)

| Date | Diesel | Gasoline | Asphalt | Steel Rebar | Portland Cement Concrete | Lumber | Plastic Construction Products | Construction Labor | Overall |
|--------|--------|----------|---------|-------------|--------------------------|--------|-------------------------------|--------------------|---------|
| Jan-92 | 0.28 | 0.36 | 0.47 | 0.66 | 0.59 | 0.68 | 0.61 | 0.66 | 0.63 |
| Feb-92 | 0.29 | 0.36 | 0.46 | 0.66 | 0.58 | 0.73 | 0.61 | 0.65 | 0.63 |
| Mar-92 | 0.28 | 0.37 | 0.50 | 0.66 | 0.58 | 0.76 | 0.62 | 0.66 | 0.63 |
| Apr-92 | 0.29 | 0.39 | 0.50 | 0.66 | 0.58 | 0.77 | 0.62 | 0.67 | 0.63 |
| May-92 | 0.31 | 0.42 | 0.50 | 0.66 | 0.58 | 0.77 | 0.63 | 0.69 | 0.63 |
| Jun-92 | 0.33 | 0.44 | 0.46 | 0.66 | 0.58 | 0.75 | 0.63 | 0.69 | 0.64 |
| Jul-92 | 0.33 | 0.42 | 0.48 | 0.66 | 0.58 | 0.74 | 0.63 | 0.69 | 0.64 |
| Aug-92 | 0.32 | 0.42 | 0.49 | 0.66 | 0.58 | 0.73 | 0.62 | 0.70 | 0.64 |
| Sep-92 | 0.33 | 0.43 | 0.47 | 0.65 | 0.58 | 0.75 | 0.62 | 0.70 | 0.64 |
| Oct-92 | 0.34 | 0.42 | 0.53 | 0.66 | 0.58 | 0.74 | 0.62 | 0.70 | 0.64 |
| Nov-92 | 0.33 | 0.41 | 0.56 | 0.66 | 0.58 | 0.76 | 0.62 | 0.69 | 0.64 |
| Dec-92 | 0.31 | 0.37 | 0.53 | 0.65 | 0.58 | 0.80 | 0.62 | 0.68 | 0.63 |
| Jan-93 | 0.31 | 0.37 | 0.61 | 0.65 | 0.59 | 0.85 | 0.63 | 0.66 | 0.64 |
| Feb-93 | 0.30 | 0.38 | 0.59 | 0.66 | 0.59 | 0.94 | 0.63 | 0.66 | 0.64 |
| Mar-93 | 0.32 | 0.39 | 0.59 | 0.66 | 0.59 | 1.02 | 0.64 | 0.68 | 0.64 |
| Apr-93 | 0.32 | 0.40 | 0.63 | 0.66 | 0.61 | 1.02 | 0.64 | 0.68 | 0.64 |
| May-93 | 0.32 | 0.41 | 0.62 | 0.67 | 0.61 | 0.98 | 0.64 | 0.70 | 0.65 |
| Jun-93 | 0.31 | 0.40 | 0.57 | 0.67 | 0.62 | 0.92 | 0.64 | 0.70 | 0.65 |
| Jul-93 | 0.29 | 0.38 | 0.62 | 0.68 | 0.62 | 0.89 | 0.65 | 0.70 | 0.64 |
| Aug-93 | 0.28 | 0.38 | 0.61 | 0.68 | 0.62 | 0.91 | 0.65 | 0.71 | 0.64 |
| Sep-93 | 0.31 | 0.37 | 0.62 | 0.68 | 0.62 | 0.93 | 0.65 | 0.72 | 0.65 |
| Oct-93 | 0.33 | 0.37 | 0.59 | 0.67 | 0.62 | 0.94 | 0.66 | 0.72 | 0.65 |
| Nov-93 | 0.32 | 0.36 | 0.63 | 0.68 | 0.63 | 0.98 | 0.66 | 0.71 | 0.65 |
| Dec-93 | 0.26 | 0.31 | 0.59 | 0.68 | 0.62 | 1.01 | 0.66 | 0.69 | 0.64 |
| Jan-94 | 0.26 | 0.31 | 0.60 | 0.68 | 0.63 | 1.05 | 0.66 | 0.68 | 0.65 |
| Feb-94 | 0.28 | 0.33 | 0.61 | 0.68 | 0.63 | 1.02 | 0.66 | 0.68 | 0.65 |
| Mar-94 | 0.29 | 0.33 | 0.57 | 0.68 | 0.64 | 1.02 | 0.66 | 0.68 | 0.65 |
| Apr-94 | 0.28 | 0.35 | 0.57 | 0.68 | 0.65 | 0.97 | 0.66 | 0.69 | 0.65 |
| May-94 | 0.28 | 0.36 | 0.66 | 0.69 | 0.65 | 0.96 | 0.67 | 0.71 | 0.65 |
| Jun-94 | 0.27 | 0.37 | 0.63 | 0.69 | 0.66 | 0.98 | 0.67 | 0.71 | 0.66 |
| Jul-94 | 0.28 | 0.39 | 0.65 | 0.70 | 0.66 | 0.95 | 0.67 | 0.72 | 0.66 |
| Aug-94 | 0.29 | 0.43 | 0.61 | 0.70 | 0.67 | 0.96 | 0.68 | 0.72 | 0.67 |
| Sep-94 | 0.29 | 0.39 | 0.60 | 0.70 | 0.67 | 0.96 | 0.70 | 0.73 | 0.67 |
| Oct-94 | 0.29 | 0.37 | 0.63 | 0.70 | 0.67 | 0.94 | 0.71 | 0.74 | 0.66 |
| Nov-94 | 0.30 | 0.38 | 0.65 | 0.70 | 0.67 | 0.95 | 0.71 | 0.72 | 0.67 |
| Dec-94 | 0.27 | 0.34 | 0.64 | 0.70 | 0.67 | 0.94 | 0.72 | 0.70 | 0.67 |
| Jan-95 | 0.27 | 0.35 | 0.64 | 0.71 | 0.68 | 0.94 | 0.72 | 0.68 | 0.67 |
| Feb-95 | 0.27 | 0.36 | 0.64 | 0.72 | 0.68 | 0.92 | 0.73 | 0.70 | 0.67 |
| Mar-95 | 0.28 | 0.36 | 0.65 | 0.74 | 0.68 | 0.93 | 0.73 | 0.70 | 0.68 |
| Apr-95 | 0.29 | 0.40 | 0.74 | 0.74 | 0.71 | 0.91 | 0.75 | 0.71 | 0.68 |
| May-95 | 0.30 | 0.42 | 0.68 | 0.74 | 0.71 | 0.90 | 0.75 | 0.72 | 0.69 |
| Jun-95 | 0.29 | 0.42 | 0.65 | 0.74 | 0.71 | 0.88 | 0.75 | 0.73 | 0.69 |
| Jul-95 | 0.27 | 0.39 | 0.65 | 0.75 | 0.71 | 0.90 | 0.75 | 0.74 | 0.69 |
| Aug-95 | 0.28 | 0.38 | 0.66 | 0.75 | 0.71 | 0.89 | 0.75 | 0.74 | 0.69 |
| Sep-95 | 0.29 | 0.38 | 0.69 | 0.75 | 0.71 | 0.90 | 0.75 | 0.75 | 0.69 |

| Date | Diesel | Gasoline | Asphalt | Steel Rebar | Portland Cement Concrete | Lumber | Plastic Construction Products | Construction Labor | Overall |
|--------|--------|----------|---------|-------------|--------------------------|--------|-------------------------------|--------------------|---------|
| Oct-95 | 0.30 | 0.36 | 0.67 | 0.75 | 0.71 | 0.89 | 0.74 | 0.75 | 0.68 |
| Nov-95 | 0.30 | 0.34 | 0.60 | 0.74 | 0.71 | 0.86 | 0.73 | 0.73 | 0.68 |
| Dec-95 | 0.30 | 0.35 | 0.56 | 0.74 | 0.71 | 0.86 | 0.73 | 0.71 | 0.69 |
| Jan-96 | 0.31 | 0.38 | 0.60 | 0.74 | 0.71 | 0.86 | 0.72 | 0.72 | 0.69 |
| Feb-96 | 0.30 | 0.37 | 0.61 | 0.74 | 0.71 | 0.86 | 0.72 | 0.71 | 0.69 |
| Mar-96 | 0.32 | 0.40 | 0.57 | 0.73 | 0.71 | 0.88 | 0.72 | 0.71 | 0.70 |
| Apr-96 | 0.38 | 0.45 | 0.59 | 0.70 | 0.73 | 0.89 | 0.72 | 0.73 | 0.70 |
| May-96 | 0.38 | 0.47 | 0.60 | 0.70 | 0.74 | 0.94 | 0.72 | 0.74 | 0.71 |
| Jun-96 | 0.33 | 0.45 | 0.65 | 0.70 | 0.74 | 0.96 | 0.73 | 0.75 | 0.70 |
| Jul-96 | 0.33 | 0.43 | 0.68 | 0.70 | 0.74 | 0.94 | 0.73 | 0.77 | 0.70 |
| Aug-96 | 0.34 | 0.43 | 0.67 | 0.70 | 0.74 | 0.95 | 0.73 | 0.77 | 0.71 |
| Sep-96 | 0.38 | 0.43 | 0.66 | 0.70 | 0.75 | 0.98 | 0.73 | 0.78 | 0.71 |
| Oct-96 | 0.40 | 0.44 | 0.62 | 0.69 | 0.75 | 0.95 | 0.72 | 0.78 | 0.71 |
| Nov-96 | 0.39 | 0.45 | 0.62 | 0.69 | 0.75 | 0.98 | 0.73 | 0.76 | 0.71 |
| Dec-96 | 0.38 | 0.45 | 0.57 | 0.69 | 0.74 | 0.98 | 0.72 | 0.73 | 0.72 |
| Jan-97 | 0.37 | 0.45 | 0.00 | 0.69 | 0.75 | 0.98 | 0.71 | 0.74 | 0.72 |
| Feb-97 | 0.37 | 0.44 | 0.64 | 0.69 | 0.75 | 1.01 | 0.71 | 0.74 | 0.72 |
| Mar-97 | 0.33 | 0.43 | 0.63 | 0.69 | 0.75 | 1.02 | 0.70 | 0.74 | 0.72 |
| Apr-97 | 0.33 | 0.43 | 0.62 | 0.69 | 0.76 | 1.03 | 0.71 | 0.75 | 0.72 |
| May-97 | 0.32 | 0.43 | 0.00 | 0.69 | 0.76 | 1.05 | 0.71 | 0.77 | 0.72 |
| Jun-97 | 0.31 | 0.42 | 0.00 | 0.69 | 0.77 | 1.02 | 0.71 | 0.77 | 0.72 |
| Jul-97 | 0.29 | 0.41 | 0.00 | 0.69 | 0.77 | 1.03 | 0.71 | 0.78 | 0.72 |
| Aug-97 | 0.31 | 0.43 | 0.00 | 0.69 | 0.77 | 1.02 | 0.71 | 0.79 | 0.72 |
| Sep-97 | 0.31 | 0.44 | 0.00 | 0.69 | 0.77 | 0.99 | 0.71 | 0.80 | 0.72 |
| Oct-97 | 0.33 | 0.41 | 0.00 | 0.69 | 0.77 | 0.97 | 0.71 | 0.80 | 0.72 |
| Nov-97 | 0.33 | 0.40 | 0.00 | 0.69 | 0.77 | 0.98 | 0.71 | 0.78 | 0.72 |
| Dec-97 | 0.30 | 0.38 | 0.00 | 0.69 | 0.77 | 0.97 | 0.71 | 0.77 | 0.72 |
| Jan-98 | 0.27 | 0.35 | 0.00 | 0.69 | 0.77 | 0.96 | 0.71 | 0.75 | 0.71 |
| Feb-98 | 0.26 | 0.33 | 0.00 | 0.69 | 0.77 | 0.97 | 0.70 | 0.76 | 0.71 |
| Mar-98 | 0.24 | 0.30 | 0.00 | 0.69 | 0.77 | 0.97 | 0.70 | 0.76 | 0.71 |
| Apr-98 | 0.25 | 0.32 | 0.00 | 0.69 | 0.80 | 0.97 | 0.70 | 0.77 | 0.71 |
| May-98 | 0.25 | 0.34 | 0.00 | 0.69 | 0.80 | 0.95 | 0.70 | 0.79 | 0.72 |
| Jun-98 | 0.23 | 0.34 | 0.00 | 0.69 | 0.80 | 0.91 | 0.70 | 0.80 | 0.71 |
| Jul-98 | 0.22 | 0.33 | 0.00 | 0.69 | 0.81 | 0.93 | 0.69 | 0.82 | 0.72 |
| Aug-98 | 0.22 | 0.30 | 0.00 | 0.69 | 0.81 | 0.93 | 0.69 | 0.82 | 0.71 |
| Sep-98 | 0.24 | 0.30 | 0.00 | 0.69 | 0.81 | 0.90 | 0.69 | 0.82 | 0.71 |
| Oct-98 | 0.24 | 0.31 | 0.00 | 0.69 | 0.81 | 0.89 | 0.69 | 0.83 | 0.71 |
| Nov-98 | 0.23 | 0.29 | 0.00 | 0.68 | 0.81 | 0.88 | 0.69 | 0.82 | 0.71 |
| Dec-98 | 0.20 | 0.25 | 0.00 | 0.68 | 0.81 | 0.90 | 0.69 | 0.81 | 0.71 |
| Jan-99 | 0.20 | 0.27 | 0.00 | 0.68 | 0.82 | 0.92 | 0.69 | 0.79 | 0.71 |
| Feb-99 | 0.19 | 0.26 | 0.00 | 0.66 | 0.82 | 0.94 | 0.69 | 0.79 | 0.71 |
| Mar-99 | 0.22 | 0.28 | 0.00 | 0.66 | 0.82 | 0.96 | 0.69 | 0.80 | 0.71 |
| Apr-99 | 0.27 | 0.38 | 0.00 | 0.67 | 0.82 | 0.96 | 0.69 | 0.81 | 0.72 |
| May-99 | 0.27 | 0.39 | 0.00 | 0.67 | 0.83 | 0.98 | 0.70 | 0.83 | 0.73 |
| Jun-99 | 0.27 | 0.37 | 0.00 | 0.67 | 0.83 | 1.01 | 0.70 | 0.84 | 0.73 |
| Jul-99 | 0.30 | 0.41 | 0.00 | 0.66 | 0.83 | 1.05 | 0.71 | 0.85 | 0.73 |
| Aug-99 | 0.33 | 0.44 | 0.00 | 0.66 | 0.83 | 1.01 | 0.72 | 0.85 | 0.74 |
| Sep-99 | 0.35 | 0.46 | 0.00 | 0.66 | 0.83 | 0.98 | 0.72 | 0.86 | 0.74 |
| Oct-99 | 0.34 | 0.43 | 0.00 | 0.67 | 0.83 | 0.95 | 0.72 | 0.86 | 0.74 |
| Nov-99 | 0.36 | 0.43 | 0.00 | 0.67 | 0.83 | 0.96 | 0.73 | 0.84 | 0.75 |
| Dec-99 | 0.37 | 0.44 | 0.00 | 0.67 | 0.82 | 0.97 | 0.73 | 0.82 | 0.75 |

| Date | Diesel | Gasoline | Asphalt | Steel Rebar | Portland Cement Concrete | Lumber | Plastic Construction Products | Construction Labor | Overall |
|--------|--------|----------|---------|-------------|--------------------------|--------|-------------------------------|--------------------|---------|
| Jan-00 | 0.38 | 0.45 | 0.00 | 0.69 | 0.82 | 0.98 | 0.73 | 0.82 | 0.76 |
| Feb-00 | 0.43 | 0.51 | 0.00 | 0.69 | 0.82 | 0.98 | 0.74 | 0.81 | 0.77 |
| Mar-00 | 0.45 | 0.56 | 0.00 | 0.69 | 0.82 | 0.98 | 0.75 | 0.82 | 0.78 |
| Apr-00 | 0.42 | 0.52 | 0.00 | 0.70 | 0.82 | 0.96 | 0.75 | 0.85 | 0.78 |
| May-00 | 0.42 | 0.56 | 0.00 | 0.71 | 0.82 | 0.93 | 0.76 | 0.85 | 0.78 |
| Jun-00 | 0.43 | 0.65 | 0.00 | 0.71 | 0.83 | 0.93 | 0.77 | 0.85 | 0.79 |
| Jul-00 | 0.45 | 0.59 | 0.00 | 0.71 | 0.83 | 0.91 | 0.77 | 0.87 | 0.79 |
| Aug-00 | 0.46 | 0.56 | 0.00 | 0.70 | 0.82 | 0.90 | 0.76 | 0.88 | 0.79 |
| Sep-00 | 0.56 | 0.61 | 0.00 | 0.70 | 0.82 | 0.89 | 0.76 | 0.88 | 0.80 |
| Oct-00 | 0.55 | 0.58 | 0.00 | 0.70 | 0.82 | 0.89 | 0.75 | 0.88 | 0.80 |
| Nov-00 | 0.56 | 0.58 | 0.00 | 0.69 | 0.82 | 0.88 | 0.74 | 0.87 | 0.80 |
| Dec-00 | 0.51 | 0.52 | 0.00 | 0.68 | 0.82 | 0.88 | 0.74 | 0.85 | 0.79 |
| Jan-01 | 0.49 | 0.55 | 0.00 | 0.68 | 0.82 | 0.86 | 0.73 | 0.83 | 0.79 |
| Feb-01 | 0.47 | 0.55 | 0.00 | 0.68 | 0.82 | 0.87 | 0.74 | 0.84 | 0.80 |
| Mar-01 | 0.42 | 0.53 | 0.00 | 0.67 | 0.82 | 0.88 | 0.74 | 0.85 | 0.79 |
| Apr-01 | 0.44 | 0.62 | 0.00 | 0.67 | 0.82 | 0.88 | 0.75 | 0.85 | 0.80 |
| May-01 | 0.47 | 0.67 | 0.00 | 0.66 | 0.82 | 0.94 | 0.75 | 0.87 | 0.81 |
| Jun-01 | 0.45 | 0.61 | 0.00 | 0.66 | 0.82 | 0.95 | 0.74 | 0.88 | 0.80 |
| Jul-01 | 0.41 | 0.51 | 0.00 | 0.66 | 0.82 | 0.91 | 0.74 | 0.89 | 0.79 |
| Aug-01 | 0.41 | 0.54 | 0.00 | 0.65 | 0.82 | 0.90 | 0.74 | 0.90 | 0.79 |
| Sep-01 | 0.46 | 0.60 | 0.00 | 0.65 | 0.82 | 0.90 | 0.72 | 0.91 | 0.80 |
| Oct-01 | 0.38 | 0.46 | 0.00 | 0.65 | 0.83 | 0.87 | 0.72 | 0.90 | 0.78 |
| Nov-01 | 0.36 | 0.40 | 0.00 | 0.65 | 0.82 | 0.86 | 0.73 | 0.89 | 0.77 |
| Dec-01 | 0.28 | 0.35 | 0.00 | 0.66 | 0.82 | 0.85 | 0.72 | 0.88 | 0.76 |
| Jan-02 | 0.30 | 0.37 | 0.00 | 0.66 | 0.82 | 0.87 | 0.72 | 0.87 | 0.77 |
| Feb-02 | 0.30 | 0.38 | 0.00 | 0.66 | 0.82 | 0.89 | 0.73 | 0.87 | 0.76 |
| Mar-02 | 0.35 | 0.46 | 0.00 | 0.66 | 0.82 | 0.90 | 0.73 | 0.88 | 0.77 |
| Apr-02 | 0.39 | 0.52 | 0.00 | 0.67 | 0.84 | 0.90 | 0.74 | 0.89 | 0.77 |
| May-02 | 0.38 | 0.51 | 0.00 | 0.67 | 0.84 | 0.90 | 0.76 | 0.90 | 0.77 |
| Jun-02 | 0.37 | 0.50 | 0.00 | 0.68 | 0.84 | 0.88 | 0.77 | 0.91 | 0.77 |
| Jul-02 | 0.39 | 0.51 | 0.82 | 0.69 | 0.84 | 0.88 | 0.77 | 0.93 | 0.77 |
| Aug-02 | 0.41 | 0.52 | 0.84 | 0.69 | 0.84 | 0.89 | 0.78 | 0.94 | 0.77 |
| Sep-02 | 0.47 | 0.53 | 0.84 | 0.69 | 0.84 | 0.88 | 0.78 | 0.95 | 0.78 |
| Oct-02 | 0.50 | 0.59 | 0.81 | 0.69 | 0.84 | 0.87 | 0.77 | 0.95 | 0.78 |
| Nov-02 | 0.43 | 0.52 | 0.80 | 0.69 | 0.84 | 0.87 | 0.75 | 0.94 | 0.77 |
| Dec-02 | 0.44 | 0.48 | 0.65 | 0.69 | 0.84 | 0.87 | 0.74 | 0.94 | 0.77 |
| Jan-03 | 0.49 | 0.56 | 0.72 | 0.69 | 0.84 | 0.87 | 0.75 | 0.92 | 0.78 |
| Feb-03 | 0.62 | 0.66 | 0.83 | 0.69 | 0.84 | 0.88 | 0.76 | 0.91 | 0.78 |
| Mar-03 | 0.65 | 0.71 | 0.95 | 0.69 | 0.84 | 0.87 | 0.77 | 0.92 | 0.79 |
| Apr-03 | 0.52 | 0.59 | 0.92 | 0.69 | 0.83 | 0.88 | 0.78 | 0.94 | 0.79 |
| May-03 | 0.44 | 0.56 | 0.90 | 0.69 | 0.84 | 0.88 | 0.78 | 0.96 | 0.79 |
| Jun-03 | 0.45 | 0.59 | 0.88 | 0.70 | 0.84 | 0.89 | 0.77 | 0.96 | 0.79 |
| Jul-03 | 0.47 | 0.60 | 0.80 | 0.70 | 0.83 | 0.91 | 0.77 | 0.96 | 0.79 |
| Aug-03 | 0.49 | 0.63 | 0.83 | 0.70 | 0.83 | 0.91 | 0.76 | 0.97 | 0.79 |
| Sep-03 | 0.46 | 0.65 | 0.81 | 0.70 | 0.83 | 0.95 | 0.77 | 0.98 | 0.79 |
| Oct-03 | 0.51 | 0.60 | 0.78 | 0.70 | 0.83 | 0.93 | 0.77 | 0.97 | 0.79 |
| Nov-03 | 0.48 | 0.56 | 0.73 | 0.71 | 0.83 | 0.93 | 0.77 | 0.95 | 0.79 |
| Dec-03 | 0.49 | 0.56 | 0.72 | 0.71 | 0.83 | 0.94 | 0.77 | 0.95 | 0.79 |
| Jan-04 | 0.55 | 0.64 | 0.80 | 0.73 | 0.83 | 0.95 | 0.77 | 0.93 | 0.81 |
| Feb-04 | 0.52 | 0.65 | 0.69 | 0.75 | 0.83 | 0.99 | 0.77 | 0.95 | 0.81 |
| Mar-04 | 0.55 | 0.69 | 0.74 | 0.77 | 0.83 | 1.03 | 0.78 | 0.95 | 0.82 |

| Date | Diesel | Gasoline | Asphalt | Steel Rebar | Portland Cement Concrete | Lumber | Plastic Construction Products | Construction Labor | Overall |
|--------|--------|----------|---------|-------------|--------------------------|--------|-------------------------------|--------------------|---------|
| Apr-04 | 0.60 | 0.74 | 0.72 | 0.80 | 0.84 | 1.07 | 0.79 | 0.97 | 0.84 |
| May-04 | 0.61 | 0.83 | 0.80 | 0.83 | 0.85 | 1.11 | 0.80 | 0.97 | 0.85 |
| Jun-04 | 0.58 | 0.76 | 0.86 | 0.87 | 0.85 | 1.08 | 0.80 | 0.98 | 0.85 |
| Jul-04 | 0.62 | 0.80 | 0.88 | 0.91 | 0.85 | 1.08 | 0.81 | 0.99 | 0.86 |
| Aug-04 | 0.68 | 0.76 | 0.88 | 0.94 | 0.87 | 1.13 | 0.81 | 1.00 | 0.87 |
| Sep-04 | 0.71 | 0.77 | 0.91 | 0.95 | 0.89 | 1.13 | 0.81 | 1.01 | 0.88 |
| Oct-04 | 0.84 | 0.88 | 0.94 | 0.98 | 0.89 | 1.06 | 0.82 | 1.00 | 0.90 |
| Nov-04 | 0.80 | 0.83 | 0.86 | 1.00 | 0.89 | 1.00 | 0.82 | 0.99 | 0.90 |
| Dec-04 | 0.68 | 0.71 | 0.85 | 1.02 | 0.89 | 1.01 | 0.82 | 0.97 | 0.88 |
| Jan-05 | 0.71 | 0.75 | 0.75 | 1.03 | 0.92 | 1.02 | 0.83 | 0.95 | 0.89 |
| Feb-05 | 0.75 | 0.81 | 0.81 | 1.01 | 0.93 | 1.06 | 0.84 | 0.96 | 0.90 |
| Mar-05 | 0.87 | 0.91 | 0.87 | 0.97 | 0.93 | 1.07 | 0.85 | 0.96 | 0.93 |
| Apr-05 | 0.88 | 0.96 | 0.88 | 0.96 | 0.95 | 1.06 | 0.85 | 0.98 | 0.94 |
| May-05 | 0.86 | 0.93 | 0.95 | 0.99 | 0.95 | 1.02 | 0.85 | 0.98 | 0.94 |
| Jun-05 | 0.94 | 0.94 | 0.93 | 0.97 | 0.95 | 1.05 | 0.85 | 1.00 | 0.94 |
| Jul-05 | 0.96 | 1.04 | 0.98 | 0.95 | 0.99 | 1.02 | 0.85 | 1.02 | 0.97 |
| Aug-05 | 1.01 | 1.12 | 1.03 | 0.93 | 0.99 | 1.00 | 0.85 | 1.02 | 0.98 |
| Sep-05 | 1.07 | 1.26 | 1.05 | 0.96 | 0.99 | 1.02 | 0.86 | 1.03 | 1.02 |
| Oct-05 | 1.33 | 1.22 | 1.11 | 1.00 | 0.99 | 1.01 | 0.92 | 1.03 | 1.04 |
| Nov-05 | 1.04 | 0.97 | 1.08 | 0.99 | 1.00 | 0.99 | 0.99 | 1.01 | 1.00 |
| Dec-05 | 1.00 | 1.00 | 1.00 | 1.00 | 1.00 | 1.00 | 1.00 | 1.00 | 1.00 |
| Jan-06 | 0.99 | 1.06 | 1.05 | 1.00 | 1.06 | 1.03 | 1.02 | 0.99 | 1.02 |
| Feb-06 | 0.99 | 0.95 | 1.04 | 0.99 | 1.06 | 1.04 | 1.01 | 0.99 | 1.01 |
| Mar-06 | 1.04 | 1.11 | 1.18 | 0.99 | 1.08 | 1.04 | 1.01 | 0.99 | 1.03 |
| Apr-06 | 1.16 | 1.28 | 1.26 | 0.99 | 1.09 | 1.03 | 1.01 | 1.01 | 1.07 |
| May-06 | 1.21 | 1.33 | 1.54 | 1.00 | 1.09 | 1.04 | 1.00 | 1.03 | 1.08 |
| Jun-06 | 1.24 | 1.36 | 1.60 | 1.02 | 1.09 | 1.00 | 1.00 | 1.05 | 1.10 |
| Jul-06 | 1.20 | 1.39 | 1.71 | 1.03 | 1.10 | 0.97 | 1.00 | 1.05 | 1.11 |
| Aug-06 | 1.26 | 1.34 | 1.82 | 1.04 | 1.10 | 0.94 | 1.01 | 1.06 | 1.11 |
| Sep-06 | 1.01 | 1.09 | 1.89 | 1.01 | 1.11 | 0.94 | 1.01 | 1.07 | 1.07 |
| Oct-06 | 0.99 | 1.00 | 1.77 | 1.02 | 1.11 | 0.90 | 1.00 | 1.10 | 1.06 |
| Nov-06 | 0.99 | 1.00 | 1.56 | 1.00 | 1.11 | 0.89 | 1.00 | 1.07 | 1.05 |
| Dec-06 | 1.02 | 1.02 | 1.35 | 0.99 | 1.10 | 0.89 | 0.99 | 1.03 | 1.06 |
| Jan-07 | 0.91 | 0.95 | 1.26 | 0.99 | 1.14 | 0.92 | 0.99 | 1.00 | 1.06 |
| Feb-07 | 0.98 | 1.00 | 1.38 | 1.00 | 1.12 | 0.92 | 0.99 | 0.98 | 1.07 |
| Mar-07 | 1.11 | 1.18 | 1.44 | 1.02 | 1.13 | 0.92 | 0.99 | 1.01 | 1.10 |
| Apr-07 | 1.20 | 1.35 | 1.41 | 1.07 | 1.16 | 0.92 | 0.99 | 1.03 | 1.12 |
| May-07 | 1.14 | 1.48 | 1.47 | 1.05 | 1.15 | 0.91 | 0.99 | 1.08 | 1.14 |
| Jun-07 | 1.15 | 1.41 | 1.52 | 1.04 | 1.15 | 0.92 | 0.99 | 1.11 | 1.13 |
| Jul-07 | 1.23 | 1.49 | 1.58 | 1.03 | 1.15 | 0.93 | 0.99 | 1.12 | 1.15 |
| Aug-07 | 1.16 | 1.28 | 1.54 | 1.03 | 1.15 | 0.92 | 0.99 | 1.13 | 1.13 |
| Sep-07 | 1.24 | 1.33 | 1.57 | 1.03 | 1.16 | 0.90 | 0.99 | 1.14 | 1.14 |
| Oct-07 | 1.26 | 1.31 | 1.56 | 1.04 | 1.16 | 0.89 | 0.99 | 1.14 | 1.14 |
| Nov-07 | 1.49 | 1.52 | 1.58 | 1.02 | 1.16 | 0.87 | 0.99 | 1.11 | 1.18 |
| Dec-07 | 1.37 | 1.39 | 1.35 | 1.03 | 1.15 | 0.87 | 1.00 | 1.09 | 1.17 |
| Jan-08 | 1.40 | 1.41 | 1.35 | 1.05 | 1.15 | 0.85 | 1.00 | 1.06 | 1.18 |
| Feb-08 | 1.45 | 1.43 | 1.40 | 1.07 | 1.15 | 0.84 | 1.00 | 1.06 | 1.19 |
| Mar-08 | 1.78 | 1.60 | 1.63 | 1.08 | 1.15 | 0.84 | 1.00 | 1.08 | 1.23 |
| Apr-08 | 1.84 | 1.66 | 1.78 | 1.14 | 1.16 | 0.84 | 1.00 | 1.10 | 1.26 |
| May-08 | 2.01 | 1.87 | 2.07 | 1.29 | 1.15 | 0.88 | 1.01 | 1.12 | 1.31 |
| Jun-08 | 2.12 | 1.96 | 2.31 | 1.31 | 1.14 | 0.88 | 1.02 | 1.13 | 1.35 |

| Date | Diesel | Gasoline | Asphalt | Steel Rebar | Portland Cement Concrete | Lumber | Plastic Construction Products | Construction Labor | Overall |
|-------------|---------------|-----------------|----------------|--------------------|---------------------------------|---------------|--------------------------------------|---------------------------|----------------|
| Jul-08 | 2.18 | 2.02 | 2.80 | 1.37 | 1.15 | 0.86 | 1.03 | 1.17 | 1.40 |
| Aug-08 | 1.75 | 1.83 | 3.39 | 1.40 | 1.15 | 0.87 | 1.05 | 1.18 | 1.38 |
| Sep-08 | 1.72 | 1.85 | 3.60 | 1.27 | 1.14 | 0.86 | 1.06 | 1.17 | 1.39 |
| Oct-08 | 1.42 | 1.36 | 2.94 | 1.20 | 1.14 | 0.82 | 1.06 | 1.15 | 1.31 |
| Nov-08 | 1.13 | 0.91 | 2.49 | 1.12 | 1.15 | 0.81 | 1.05 | 1.13 | 1.22 |
| Dec-08 | 0.86 | 0.67 | 1.99 | 0.96 | 1.15 | 0.80 | 1.03 | 1.10 | 1.16 |