

# **Price Trends for Major Roadway Inputs**

**December 2010 Update**

**Prepared by:**

John Semmens  
Arizona Transportation Institute  
jsemmens@cox.net

## TABLE OF CONTENTS

REPORT DATA .....	3
REMAINDER OF THE REPORT.....	3
SHORT TERM FLUCTUATIONS .....	4
LONG TERM FLUCTUATIONS .....	5
1-YEAR .....	5
5-YEARS .....	5
10-YEARS .....	5
TREND .....	5
GRAPHS.....	6
ASPHALT.....	6
DIESEL.....	6
GASOLINE.....	7
LABOR.....	7
LUMBER.....	8
PORTLAND CEMENT.....	8
PLASTIC CONSTRUCTION PRODUCTS .....	9
STEEL REBAR .....	9
APPENDIX: DATASET .....	10

## REPORT DATA

The data for this report is obtained from U.S. Department of Labor Bureau of Labor Statistics' web site at <http://www.bls.gov/data/> and <http://data.bls.gov/cgi-bin/srgate>. The Highway and Street Construction index (PCUBHWY) has been discontinued by the Bureau of Labor Statistics. The Federal Highway Administration has also discontinued its bid price index. Consequently, the "over all" index for highway construction costs can no longer be included in this report. The remaining specific individual items still reported are as follows:

<b>Item</b>	<b>Code #</b>
Asphalt	WPU05810112
Construction Labor	CEU2023730008
Diesel	WPU05730302
Gasoline	WPU0571
Lumber	WPU081
Plastic Construction Products	WPU072106
Portland Cement	WPU13220161
Steel Rebar	WPU101708

## REMAINDER OF THE REPORT

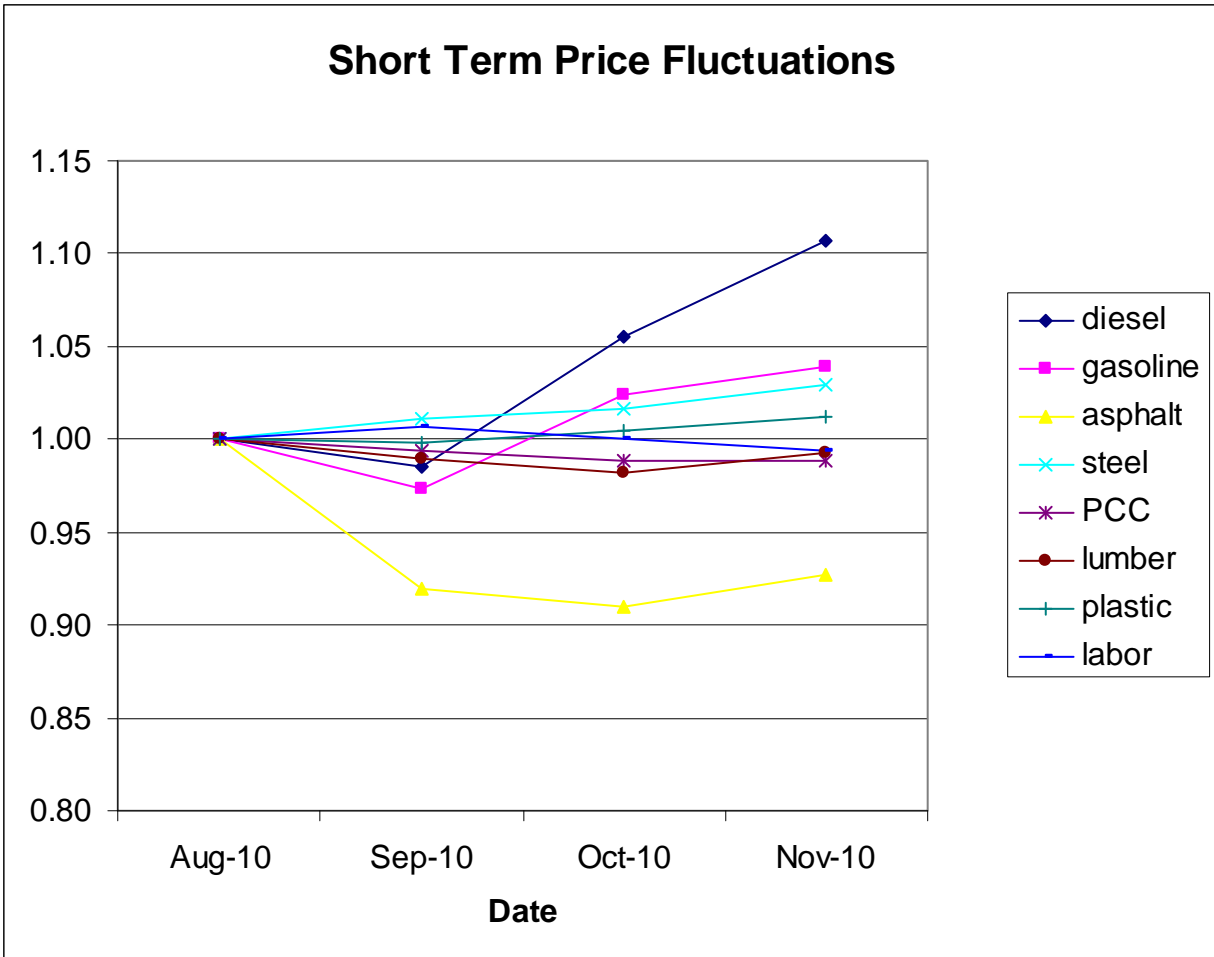
The remainder of this report portrays and discusses: (1) short term price fluctuations, (2) the longer term trend in prices. Numerous graphs depict the price trends. A full set of data for all items covered in this report is shown in the Appendix.

## SHORT TERM FLUCTUATIONS

The purpose of this section is to provide users with information that may help explain differences in prices that may exist between the pre-bid estimate and the actual winning bid for a project. Pre-bid estimates are prepared approximately 3 months prior to the due date for bids. If prices of key components of construction are volatile, the differences between the state's estimate and bid price for a project may be substantial.

As shown in Figure 1, diesel prices rose the most (+11%). Asphalt (-7%) declined the most.

	diesel	gasoline	asphalt	steel	PCC	lumber	plastic	labor
<i>Aug 10 to Sep 10</i>	-2%	-3%	-8%	+1%	-1%	-1%	0%	+1%
<i>Aug 10 to Oct 10</i>	+6%	+2%	-9%	+2%	-1%	-2%	0%	0%
<i>Aug 10 to Nov 10</i>	+11%	+4%	-7%	+3%	-1%	-1%	+1%	-1%



**Figure 1. Short Term Price Fluctuations**

## LONG TERM FLUCTUATIONS

The purpose of this section is to give users a quick look at the relative changes in prices over the time spans of 1-year, 5-years, and 10-years. This gives a sense for which items have been the largest factors affecting the cost of construction projects over time.

### 1-YEAR

Over the last year, diesel prices have increased the most (+19%). Portland Concrete declined the most (-6%).

### 5-YEARS

Over the last 5 years, asphalt prices rose the most (+98%). Lumber prices declined (-14%).

### 10-YEARS

Over the last 10 years, gasoline prices rose the most (+136%). Lumber has actually declined in price (-4%).

	<b>diesel</b>	<b>gasoline</b>	<b>asphalt</b>	<b>steel</b>	<b>PCC</b>	<b>lumber</b>	<b>plastic</b>	<b>labor</b>
<i>1 year</i>	+19%	+12%	+4%	+15%	-6%	+7%	+3%	+2%
<i>5 years</i>	+24%	+41%	+98%	+11%	+5%	-14%	+7%	+23%
<i>10 years</i>	+132%	+136%	*	+60%	+27%	-4%	+43%	+42%
* There is a gap in the data for asphalt that prevents a calculation of the price change over this time span.								

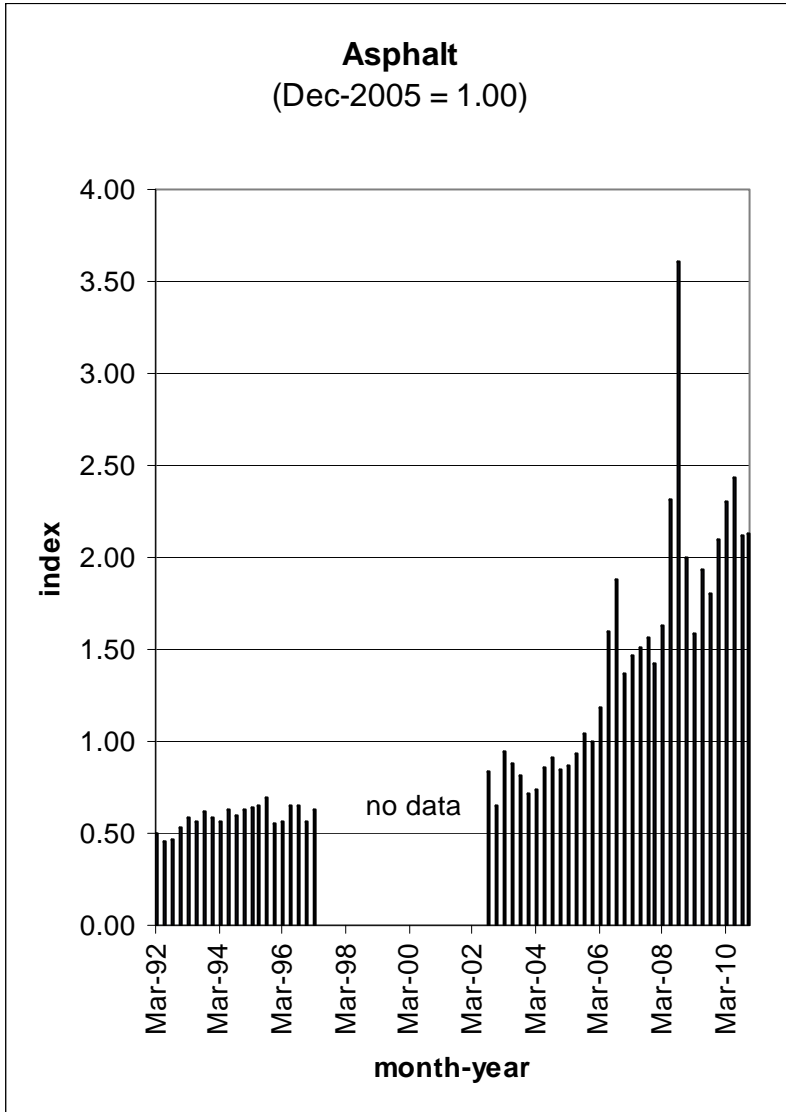
The long term graphs for each commodity and the overall index appear on the following pages. The full data set is in the Appendix.

### TREND

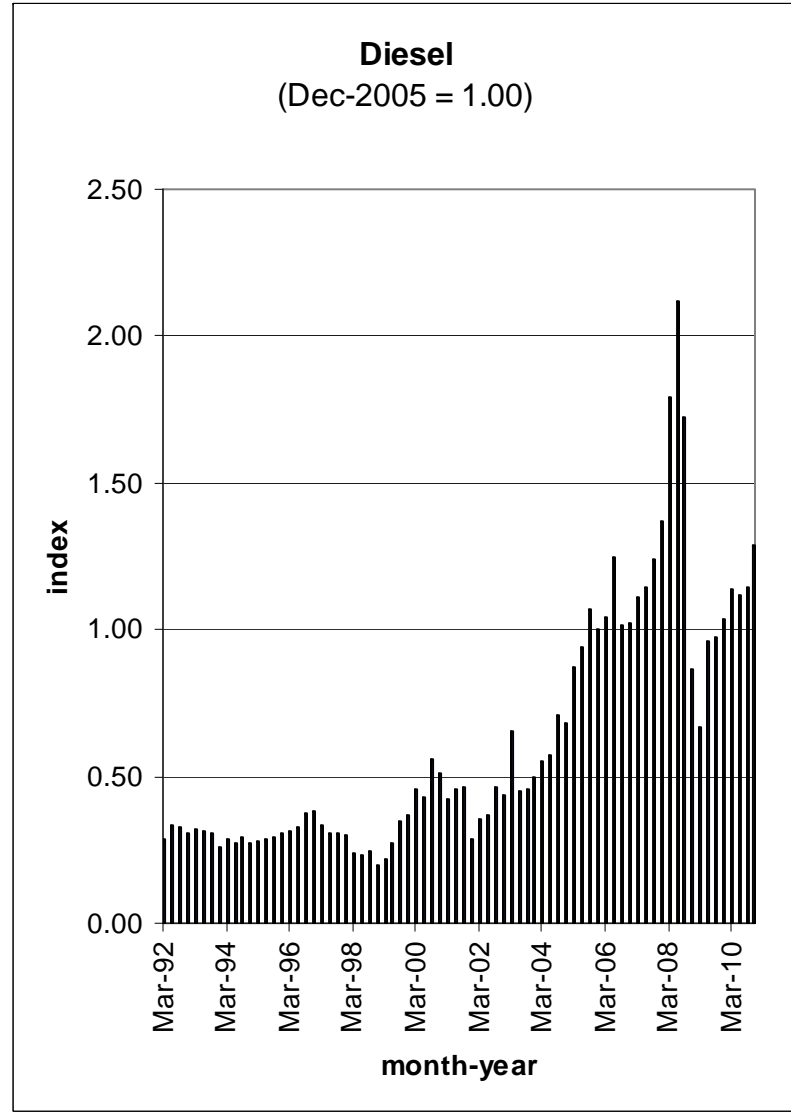
The general pattern over the period covered (1992 to the present) shows a moderate rate of price increases for the first 12 years and an accelerated rate of increases for the next 4-year period. Recessionary economic conditions are holding most prices down for the time being. Whether this pattern will persist over time is uncertain.

# GRAPHS

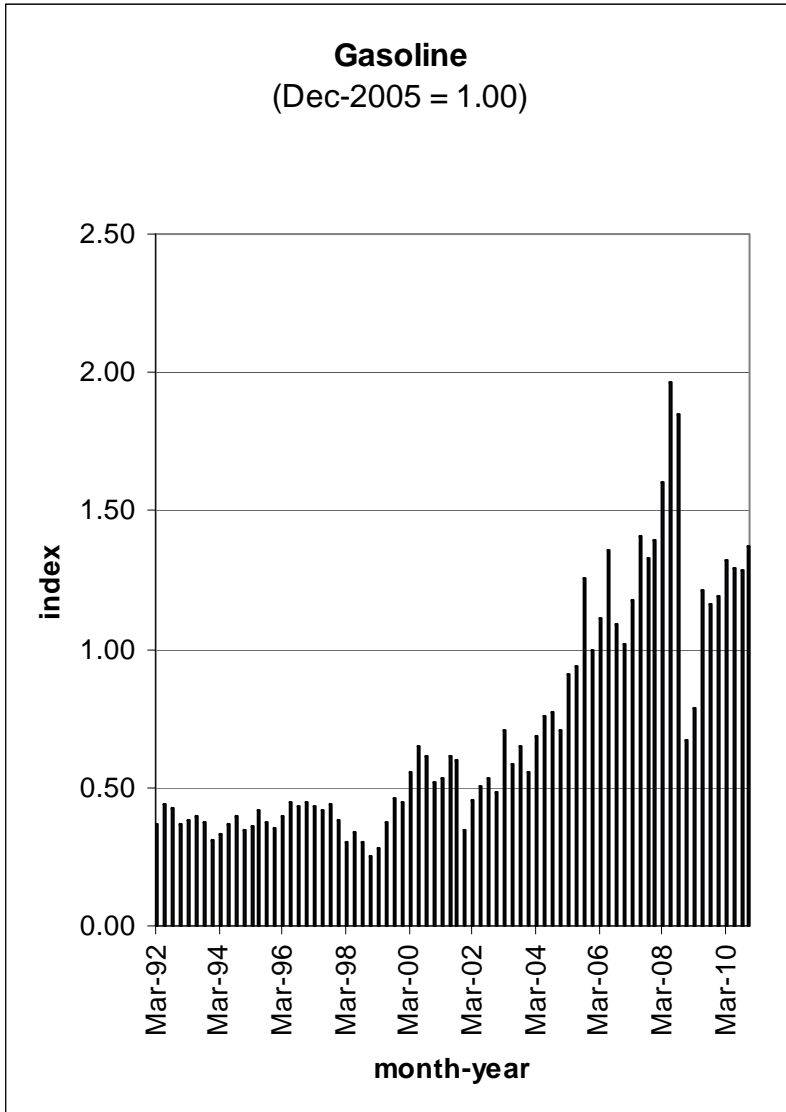
## ASPHALT



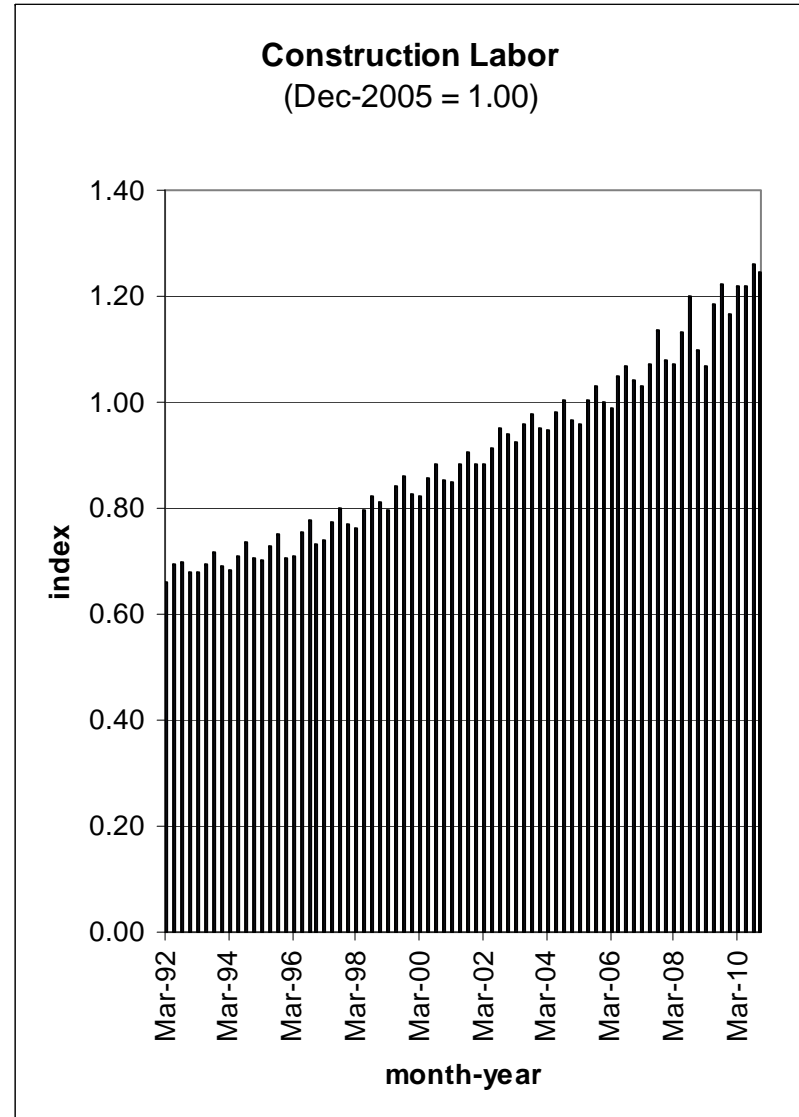
## DIESEL



### GASOLINE

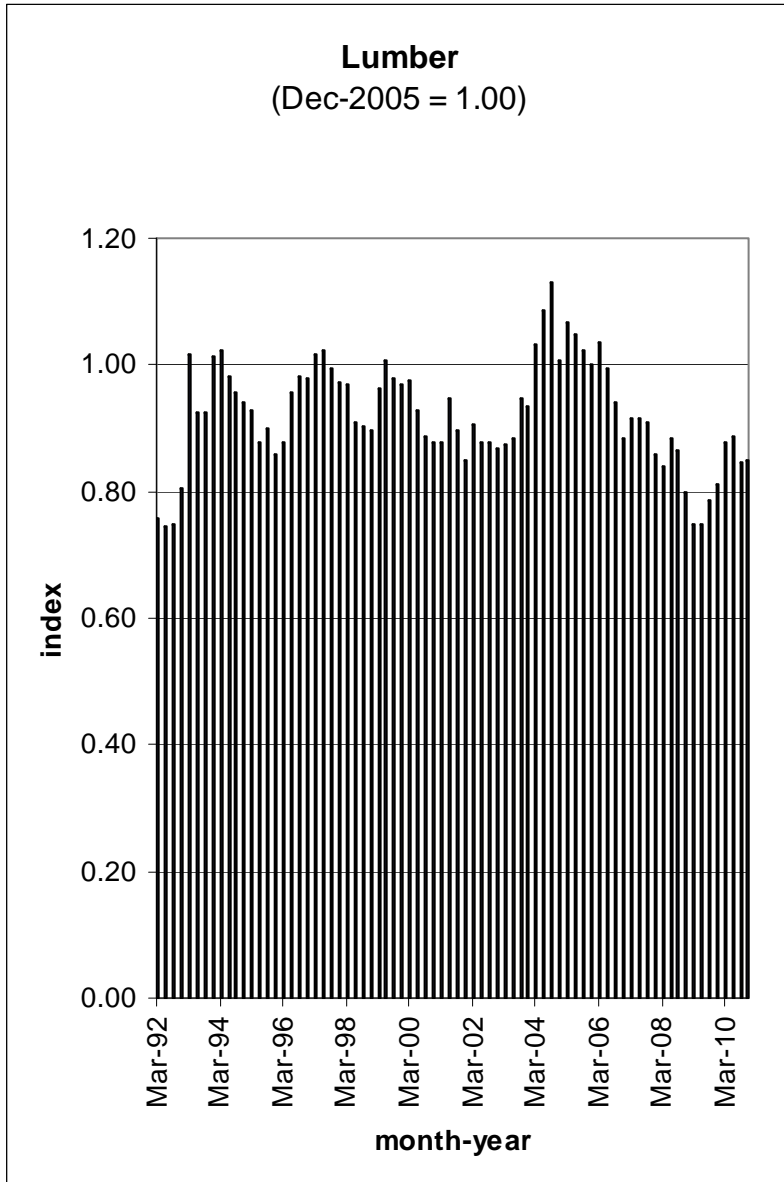


### LABOR



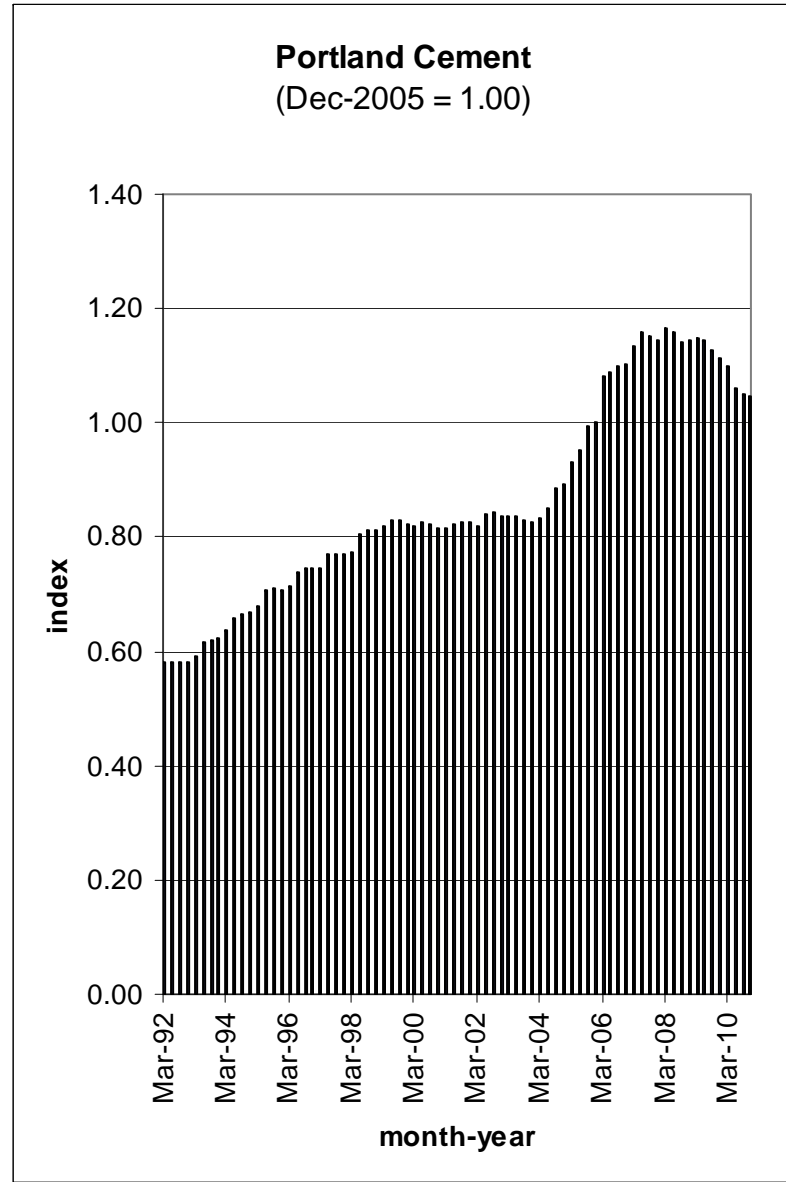
### LUMBER

**Lumber**  
(Dec-2005 = 1.00)

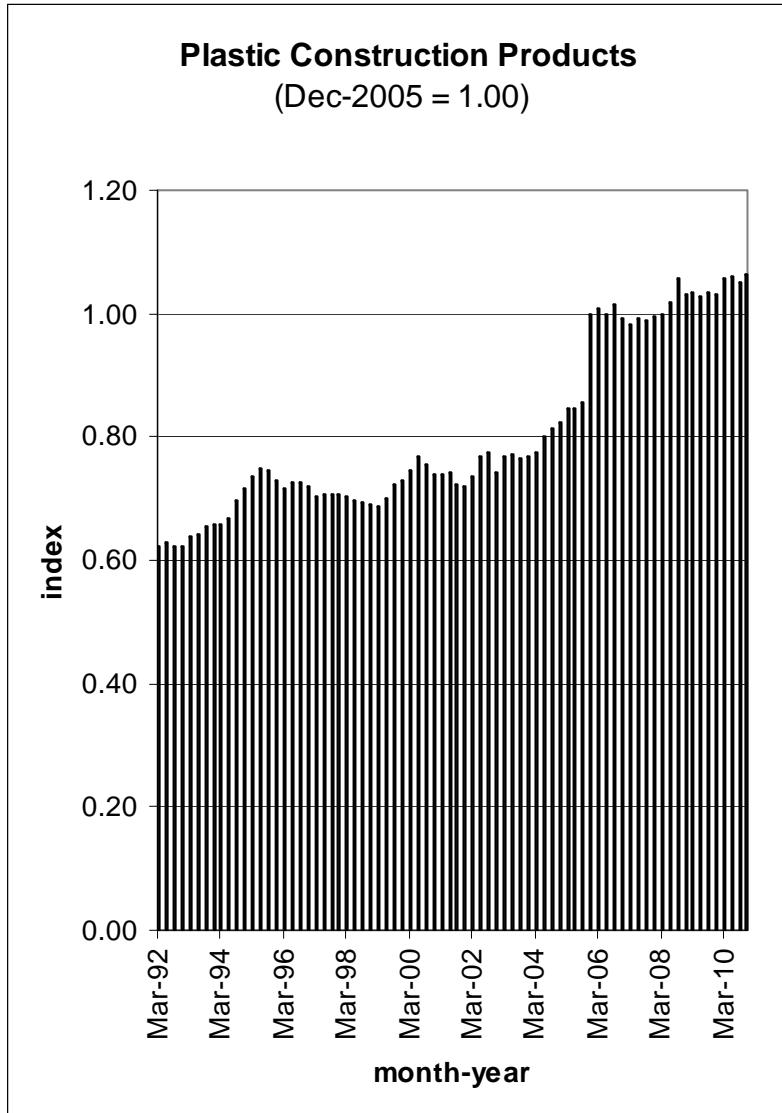


### PORTLAND CEMENT

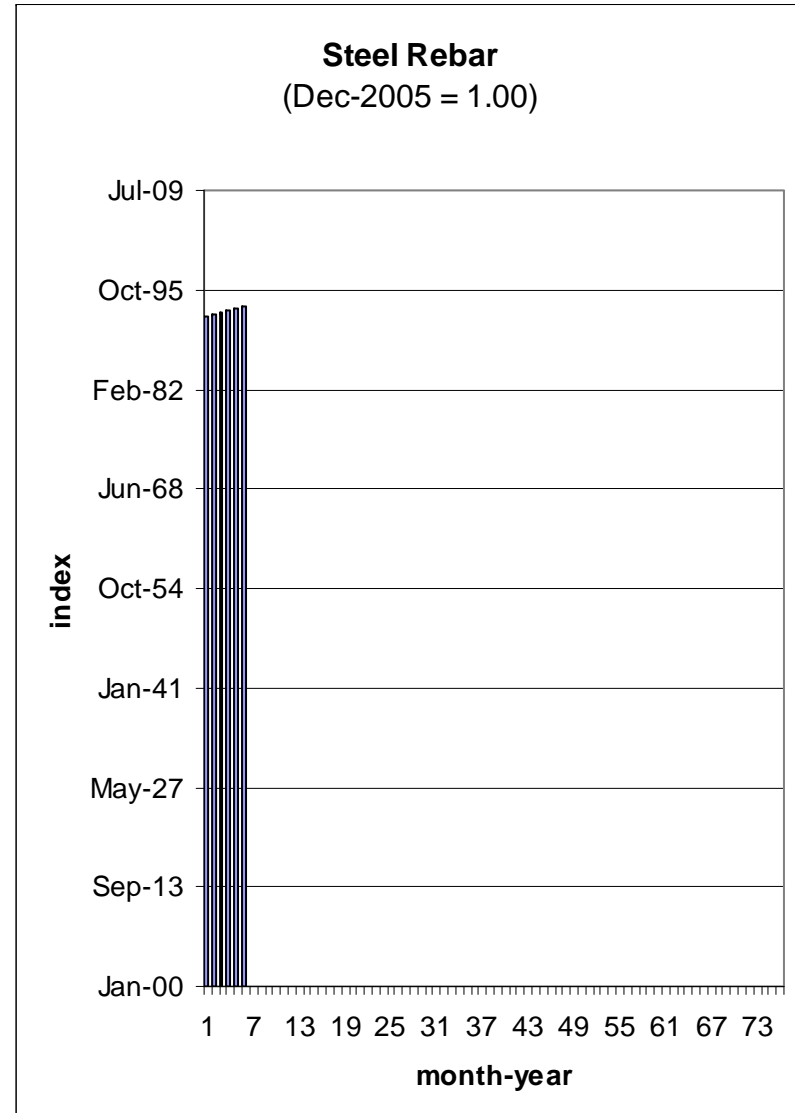
**Portland Cement**  
(Dec-2005 = 1.00)



### PLASTIC CONSTRUCTION PRODUCTS



### STEEL REBAR



## APPENDIX: DATASET

(Dec-2005 = 1.00)

Date	Diesel	Gasoline	Asphalt	Steel Rebar	Portland Cement Concrete	Lumber	Plastic Construction Products	Construction Labor
Jan-92	0.28	0.36	0.47	0.66	0.59	0.68	0.61	0.66
Feb-92	0.29	0.36	0.46	0.66	0.58	0.73	0.61	0.65
Mar-92	0.28	0.37	0.50	0.66	0.58	0.76	0.62	0.66
Apr-92	0.29	0.39	0.50	0.66	0.58	0.77	0.62	0.67
May-92	0.31	0.42	0.50	0.66	0.58	0.77	0.63	0.69
Jun-92	0.33	0.44	0.46	0.66	0.58	0.75	0.63	0.69
Jul-92	0.33	0.42	0.48	0.66	0.58	0.74	0.63	0.69
Aug-92	0.32	0.42	0.49	0.66	0.58	0.73	0.62	0.70
Sep-92	0.33	0.43	0.47	0.65	0.58	0.75	0.62	0.70
Oct-92	0.34	0.42	0.53	0.66	0.58	0.74	0.62	0.70
Nov-92	0.33	0.41	0.56	0.66	0.58	0.76	0.62	0.69
Dec-92	0.31	0.37	0.53	0.65	0.58	0.80	0.62	0.68
Jan-93	0.31	0.37	0.61	0.65	0.59	0.85	0.63	0.66
Feb-93	0.30	0.38	0.59	0.66	0.59	0.94	0.63	0.66
Mar-93	0.32	0.39	0.59	0.66	0.59	1.02	0.64	0.68
Apr-93	0.32	0.40	0.63	0.66	0.61	1.02	0.64	0.68
May-93	0.32	0.41	0.62	0.67	0.61	0.98	0.64	0.70
Jun-93	0.31	0.40	0.57	0.67	0.62	0.92	0.64	0.70
Jul-93	0.29	0.38	0.62	0.68	0.62	0.89	0.65	0.70
Aug-93	0.28	0.38	0.61	0.68	0.62	0.91	0.65	0.71
Sep-93	0.31	0.37	0.62	0.68	0.62	0.93	0.65	0.72
Oct-93	0.33	0.37	0.59	0.67	0.62	0.94	0.66	0.72
Nov-93	0.32	0.36	0.63	0.68	0.63	0.98	0.66	0.71
Dec-93	0.26	0.31	0.59	0.68	0.62	1.01	0.66	0.69
Jan-94	0.26	0.31	0.60	0.68	0.63	1.05	0.66	0.68
Feb-94	0.28	0.33	0.61	0.68	0.63	1.02	0.66	0.68
Mar-94	0.29	0.33	0.57	0.68	0.64	1.02	0.66	0.68
Apr-94	0.28	0.35	0.57	0.68	0.65	0.97	0.66	0.69
May-94	0.28	0.36	0.66	0.69	0.65	0.96	0.67	0.71
Jun-94	0.27	0.37	0.63	0.69	0.66	0.98	0.67	0.71
Jul-94	0.28	0.39	0.65	0.70	0.66	0.95	0.67	0.72
Aug-94	0.29	0.43	0.61	0.70	0.67	0.96	0.68	0.72
Sep-94	0.29	0.39	0.60	0.70	0.67	0.96	0.70	0.73
Oct-94	0.29	0.37	0.63	0.70	0.67	0.94	0.71	0.74
Nov-94	0.30	0.38	0.65	0.70	0.67	0.95	0.71	0.72
Dec-94	0.27	0.34	0.64	0.70	0.67	0.94	0.72	0.70
Jan-95	0.27	0.35	0.64	0.71	0.68	0.94	0.72	0.68
Feb-95	0.27	0.36	0.64	0.72	0.68	0.92	0.73	0.70
Mar-95	0.28	0.36	0.65	0.74	0.68	0.93	0.73	0.70
Apr-95	0.29	0.40	0.74	0.74	0.71	0.91	0.75	0.71
May-95	0.30	0.42	0.68	0.74	0.71	0.90	0.75	0.72
Jun-95	0.29	0.42	0.65	0.74	0.71	0.88	0.75	0.73
Jul-95	0.27	0.39	0.65	0.75	0.71	0.90	0.75	0.74
Aug-95	0.28	0.38	0.66	0.75	0.71	0.89	0.75	0.74
Sep-95	0.29	0.38	0.69	0.75	0.71	0.90	0.75	0.75

Date	Diesel	Gasoline	Asphalt	Steel Rebar	Portland Cement Concrete	Lumber	Plastic Construction Products	Construction Labor
Oct-95	0.30	0.36	0.67	0.75	0.71	0.89	0.74	0.75
Nov-95	0.30	0.34	0.60	0.74	0.71	0.86	0.73	0.73
Dec-95	0.30	0.35	0.56	0.74	0.71	0.86	0.73	0.71
Jan-96	0.31	0.38	0.60	0.74	0.71	0.86	0.72	0.72
Feb-96	0.30	0.37	0.61	0.74	0.71	0.86	0.72	0.71
Mar-96	0.32	0.40	0.57	0.73	0.71	0.88	0.72	0.71
Apr-96	0.38	0.45	0.59	0.70	0.73	0.89	0.72	0.73
May-96	0.38	0.47	0.60	0.70	0.74	0.94	0.72	0.74
Jun-96	0.33	0.45	0.65	0.70	0.74	0.96	0.73	0.75
Jul-96	0.33	0.43	0.68	0.70	0.74	0.94	0.73	0.77
Aug-96	0.34	0.43	0.67	0.70	0.74	0.95	0.73	0.77
Sep-96	0.38	0.43	0.66	0.70	0.75	0.98	0.73	0.78
Oct-96	0.40	0.44	0.62	0.69	0.75	0.95	0.72	0.78
Nov-96	0.39	0.45	0.62	0.69	0.75	0.98	0.73	0.76
Dec-96	0.38	0.45	0.57	0.69	0.74	0.98	0.72	0.73
Jan-97	0.37	0.45	0.00	0.69	0.75	0.98	0.71	0.74
Feb-97	0.37	0.44	0.64	0.69	0.75	1.01	0.71	0.74
Mar-97	0.33	0.43	0.63	0.69	0.75	1.02	0.70	0.74
Apr-97	0.33	0.43	0.62	0.69	0.76	1.03	0.71	0.75
May-97	0.32	0.43		0.69	0.76	1.05	0.71	0.77
Jun-97	0.31	0.42		0.69	0.77	1.02	0.71	0.77
Jul-97	0.29	0.41		0.69	0.77	1.03	0.71	0.78
Aug-97	0.31	0.43		0.69	0.77	1.02	0.71	0.79
Sep-97	0.31	0.44		0.69	0.77	0.99	0.71	0.80
Oct-97	0.33	0.41		0.69	0.77	0.97	0.71	0.80
Nov-97	0.33	0.40		0.69	0.77	0.98	0.71	0.78
Dec-97	0.30	0.38		0.69	0.77	0.97	0.71	0.77
Jan-98	0.27	0.35		0.69	0.77	0.96	0.71	0.75
Feb-98	0.26	0.33		0.69	0.77	0.97	0.70	0.76
Mar-98	0.24	0.30		0.69	0.77	0.97	0.70	0.76
Apr-98	0.25	0.32		0.69	0.80	0.97	0.70	0.77
May-98	0.25	0.34		0.69	0.80	0.95	0.70	0.79
Jun-98	0.23	0.34		0.69	0.80	0.91	0.70	0.80
Jul-98	0.22	0.33		0.69	0.81	0.93	0.69	0.82
Aug-98	0.22	0.30		0.69	0.81	0.93	0.69	0.82
Sep-98	0.24	0.30		0.69	0.81	0.90	0.69	0.82
Oct-98	0.24	0.31		0.69	0.81	0.89	0.69	0.83
Nov-98	0.23	0.29		0.68	0.81	0.88	0.69	0.82
Dec-98	0.20	0.25		0.68	0.81	0.90	0.69	0.81
Jan-99	0.20	0.27		0.68	0.82	0.92	0.69	0.79
Feb-99	0.19	0.26		0.66	0.82	0.94	0.69	0.79
Mar-99	0.22	0.28		0.66	0.82	0.96	0.69	0.80
Apr-99	0.27	0.38		0.67	0.82	0.96	0.69	0.81
May-99	0.27	0.39		0.67	0.83	0.98	0.70	0.83
Jun-99	0.27	0.37		0.67	0.83	1.01	0.70	0.84
Jul-99	0.30	0.41		0.66	0.83	1.05	0.71	0.85
Aug-99	0.33	0.44		0.66	0.83	1.01	0.72	0.85
Sep-99	0.35	0.46		0.66	0.83	0.98	0.72	0.86
Oct-99	0.34	0.43		0.67	0.83	0.95	0.72	0.86
Nov-99	0.36	0.43		0.67	0.83	0.96	0.73	0.84
Dec-99	0.37	0.44		0.67	0.82	0.97	0.73	0.82

Date	Diesel	Gasoline	Asphalt	Steel Rebar	Portland Cement Concrete	Lumber	Plastic Construction Products	Construction Labor
Jan-00	0.38	0.45		0.69	0.82	0.98	0.73	0.82
Feb-00	0.43	0.51		0.69	0.82	0.98	0.74	0.81
Mar-00	0.45	0.56		0.69	0.82	0.98	0.75	0.82
Apr-00	0.42	0.52		0.70	0.82	0.96	0.75	0.85
May-00	0.42	0.56		0.71	0.82	0.93	0.76	0.85
Jun-00	0.43	0.65		0.71	0.83	0.93	0.77	0.85
Jul-00	0.45	0.59		0.71	0.83	0.91	0.77	0.87
Aug-00	0.46	0.56		0.70	0.82	0.90	0.76	0.88
Sep-00	0.56	0.61		0.70	0.82	0.89	0.76	0.88
Oct-00	0.55	0.58		0.70	0.82	0.89	0.75	0.88
Nov-00	0.56	0.58		0.69	0.82	0.88	0.74	0.87
Dec-00	0.51	0.52		0.68	0.82	0.88	0.74	0.85
Jan-01	0.49	0.55		0.68	0.82	0.86	0.73	0.83
Feb-01	0.47	0.55		0.68	0.82	0.87	0.74	0.84
Mar-01	0.42	0.53		0.67	0.82	0.88	0.74	0.85
Apr-01	0.44	0.62		0.67	0.82	0.88	0.75	0.85
May-01	0.47	0.67		0.66	0.82	0.94	0.75	0.87
Jun-01	0.45	0.61		0.66	0.82	0.95	0.74	0.88
Jul-01	0.41	0.51		0.66	0.82	0.91	0.74	0.89
Aug-01	0.41	0.54		0.65	0.82	0.90	0.74	0.90
Sep-01	0.46	0.60		0.65	0.82	0.90	0.72	0.91
Oct-01	0.38	0.46		0.65	0.83	0.87	0.72	0.90
Nov-01	0.36	0.40		0.65	0.82	0.86	0.73	0.89
Dec-01	0.28	0.35		0.66	0.82	0.85	0.72	0.88
Jan-02	0.30	0.37		0.66	0.82	0.87	0.72	0.87
Feb-02	0.30	0.38		0.66	0.82	0.89	0.73	0.87
Mar-02	0.35	0.46		0.66	0.82	0.90	0.73	0.88
Apr-02	0.39	0.52		0.67	0.84	0.90	0.74	0.89
May-02	0.38	0.51		0.67	0.84	0.90	0.76	0.90
Jun-02	0.37	0.50		0.68	0.84	0.88	0.77	0.91
Jul-02	0.39	0.51	0.82	0.69	0.84	0.88	0.77	0.93
Aug-02	0.41	0.52	0.84	0.69	0.84	0.89	0.78	0.94
Sep-02	0.47	0.53	0.84	0.69	0.84	0.88	0.78	0.95
Oct-02	0.50	0.59	0.81	0.69	0.84	0.87	0.77	0.95
Nov-02	0.43	0.52	0.80	0.69	0.84	0.87	0.75	0.94
Dec-02	0.44	0.48	0.65	0.69	0.84	0.87	0.74	0.94
Jan-03	0.49	0.56	0.72	0.69	0.84	0.87	0.75	0.92
Feb-03	0.62	0.66	0.83	0.69	0.84	0.88	0.76	0.91
Mar-03	0.65	0.71	0.95	0.69	0.84	0.87	0.77	0.92
Apr-03	0.52	0.59	0.92	0.69	0.83	0.88	0.78	0.94
May-03	0.44	0.56	0.90	0.69	0.84	0.88	0.78	0.96
Jun-03	0.45	0.59	0.88	0.70	0.84	0.89	0.77	0.96
Jul-03	0.47	0.60	0.80	0.70	0.83	0.91	0.77	0.96
Aug-03	0.49	0.63	0.83	0.70	0.83	0.91	0.76	0.97
Sep-03	0.46	0.65	0.81	0.70	0.83	0.95	0.77	0.98
Oct-03	0.51	0.60	0.78	0.70	0.83	0.93	0.77	0.97
Nov-03	0.48	0.56	0.73	0.71	0.83	0.93	0.77	0.95
Dec-03	0.49	0.56	0.72	0.71	0.83	0.94	0.77	0.95
Jan-04	0.55	0.64	0.80	0.73	0.83	0.95	0.77	0.93
Feb-04	0.52	0.65	0.69	0.75	0.83	0.99	0.77	0.95
Mar-04	0.55	0.69	0.74	0.77	0.83	1.03	0.78	0.95

Date	Diesel	Gasoline	Asphalt	Steel Rebar	Portland Cement Concrete	Lumber	Plastic Construction Products	Construction Labor
Apr-04	0.60	0.74	0.72	0.80	0.84	1.07	0.79	0.97
May-04	0.61	0.83	0.80	0.83	0.85	1.11	0.80	0.97
Jun-04	0.58	0.76	0.86	0.87	0.85	1.08	0.80	0.98
Jul-04	0.62	0.80	0.88	0.91	0.85	1.08	0.81	0.99
Aug-04	0.68	0.76	0.88	0.94	0.87	1.13	0.81	1.00
Sep-04	0.71	0.77	0.91	0.95	0.89	1.13	0.81	1.01
Oct-04	0.84	0.88	0.94	0.98	0.89	1.06	0.82	1.00
Nov-04	0.80	0.83	0.86	1.00	0.89	1.00	0.82	0.99
Dec-04	0.68	0.71	0.85	1.02	0.89	1.01	0.82	0.97
Jan-05	0.71	0.75	0.75	1.03	0.92	1.02	0.83	0.95
Feb-05	0.75	0.81	0.81	1.01	0.93	1.06	0.84	0.96
Mar-05	0.87	0.91	0.87	0.97	0.93	1.07	0.85	0.96
Apr-05	0.88	0.96	0.88	0.96	0.95	1.06	0.85	0.98
May-05	0.86	0.93	0.95	0.99	0.95	1.02	0.85	0.98
Jun-05	0.94	0.94	0.93	0.97	0.95	1.05	0.85	1.00
Jul-05	0.96	1.04	0.98	0.95	0.99	1.02	0.85	1.02
Aug-05	1.01	1.12	1.03	0.93	0.99	1.00	0.85	1.02
Sep-05	1.07	1.26	1.05	0.96	0.99	1.02	0.86	1.03
Oct-05	1.33	1.22	1.11	1.00	0.99	1.01	0.92	1.03
Nov-05	1.04	0.97	1.08	0.99	1.00	0.99	0.99	1.01
Dec-05	1.00	1.00	1.00	1.00	1.00	1.00	1.00	1.00
Jan-06	0.99	1.06	1.05	1.00	1.06	1.03	1.02	0.99
Feb-06	0.99	0.95	1.04	0.99	1.06	1.04	1.01	0.99
Mar-06	1.04	1.11	1.18	0.99	1.08	1.04	1.01	0.99
Apr-06	1.16	1.28	1.26	0.99	1.09	1.03	1.01	1.01
May-06	1.21	1.33	1.54	1.00	1.09	1.04	1.00	1.03
Jun-06	1.24	1.36	1.60	1.02	1.09	1.00	1.00	1.05
Jul-06	1.20	1.39	1.71	1.03	1.10	0.97	1.00	1.05
Aug-06	1.26	1.34	1.82	1.04	1.10	0.94	1.01	1.06
Sep-06	1.01	1.09	1.89	1.01	1.11	0.94	1.01	1.07
Oct-06	0.99	1.00	1.77	1.02	1.11	0.90	1.00	1.10
Nov-06	0.99	1.00	1.56	1.00	1.11	0.89	1.00	1.07
Dec-06	1.02	1.02	1.35	0.99	1.10	0.89	0.99	1.03
Jan-07	0.91	0.95	1.26	0.99	1.14	0.92	0.99	1.00
Feb-07	0.98	1.00	1.38	1.00	1.12	0.92	0.99	0.98
Mar-07	1.11	1.18	1.44	1.02	1.13	0.92	0.99	1.01
Apr-07	1.20	1.35	1.41	1.07	1.16	0.92	0.99	1.03
May-07	1.14	1.48	1.47	1.05	1.15	0.91	0.99	1.08
Jun-07	1.15	1.41	1.52	1.04	1.15	0.92	0.99	1.11
Jul-07	1.23	1.49	1.58	1.03	1.15	0.93	0.99	1.12
Aug-07	1.16	1.28	1.54	1.03	1.15	0.92	0.99	1.13
Sep-07	1.24	1.33	1.57	1.03	1.16	0.90	0.99	1.14
Oct-07	1.26	1.31	1.56	1.04	1.16	0.89	0.99	1.14
Nov-07	1.49	1.52	1.58	1.02	1.16	0.87	0.99	1.11
Dec-07	1.37	1.39	1.35	1.03	1.15	0.87	1.00	1.09
Jan-08	1.40	1.41	1.35	1.05	1.15	0.85	1.00	1.05
Feb-08	1.45	1.43	1.64	1.07	1.15	0.84	1.00	1.06
Mar-08	1.78	1.60	1.63	1.08	1.15	0.84	1.00	1.07
Apr-08	1.84	1.66	1.78	1.14	1.16	0.84	1.00	1.10
May-08	2.01	1.87	2.07	1.29	1.15	0.88	1.01	1.12
Jun-08	2.12	1.96	2.31	1.31	1.14	0.88	1.02	1.13

Date	Diesel	Gasoline	Asphalt	Steel Rebar	Portland Cement Concrete	Lumber	Plastic Construction Products	Construction Labor
Jul-08	2.18	2.02	2.80	1.37	1.15	0.86	1.03	1.18
Aug-08	1.75	1.83	3.39	1.40	1.15	0.87	1.05	1.18
Sep-08	1.72	1.86	3.60	1.34	1.15	0.86	1.06	1.17
Oct-08	1.42	1.36	2.94	1.23	1.15	0.83	1.06	1.15
Nov-08	1.13	0.91	2.49	1.10	1.15	0.81	1.05	1.12
Dec-08	0.85	0.67	1.99	0.97	1.14	0.80	1.04	1.11
Jan-09	0.81	0.78	1.53	0.98	1.16	0.78	1.03	1.09
Feb-09	0.74	0.81	1.50	0.94	1.14	0.77	1.03	1.08
Mar-09	0.70	0.79	1.54	0.92	1.15	0.75	1.03	1.13
Apr-09	0.84	0.89	1.64	0.89	1.16	0.75	1.02	1.14
May-09	0.84	1.03	1.82	0.88	1.15	0.74	1.03	1.18
Jun-09	0.96	1.22	1.88	0.90	1.14	0.75	1.03	1.19
Jul-09	0.87	1.11	1.93	0.91	1.13	0.78	1.03	1.21
Aug-09	1.03	1.23	2.01	0.94	1.12	0.78	1.02	1.22
Sep-09	0.97	1.17	1.88	0.95	1.12	0.79	1.03	1.21
Oct-09	1.02	1.14	1.86	0.96	1.11	0.78	1.04	1.24
Nov-09	1.09	1.23	2.06	0.96	1.11	0.79	1.03	1.21
Dec-09	1.03	1.20	2.11	0.96	1.10	0.81	1.03	1.16
Jan-10	1.16	1.31	2.08	0.98	1.09	0.81	1.04	1.13
Feb-10	1.04	1.21	2.25	1.02	1.09	0.86	1.04	1.18
Mar-10	1.14	1.33	2.30	1.06	1.08	0.88	1.05	1.14
Apr-10	1.22	1.37	2.39	1.08	1.07	0.91	1.06	1.17
May-10	1.19	1.35	2.47	1.11	1.06	0.93	1.06	1.20
Jun-10	1.12	1.29	2.43	1.11	1.05	0.89	1.06	1.21
Jul-10	1.10	1.30	2.38	1.10	1.05	0.87	1.05	1.23
Aug-10	1.16	1.32	2.30	1.07	1.06	0.86	1.05	1.25
Sep-10	1.15	1.28	2.12	1.08	1.05	0.85	1.05	1.26
Oct-10	1.23	1.35	2.10	1.09	1.05	0.84	1.06	1.25
Nov-10	1.29	1.37	2.14	1.10	1.05	0.85	1.06	1.24